



KYLE DE CROWN
NOTTINGHAM

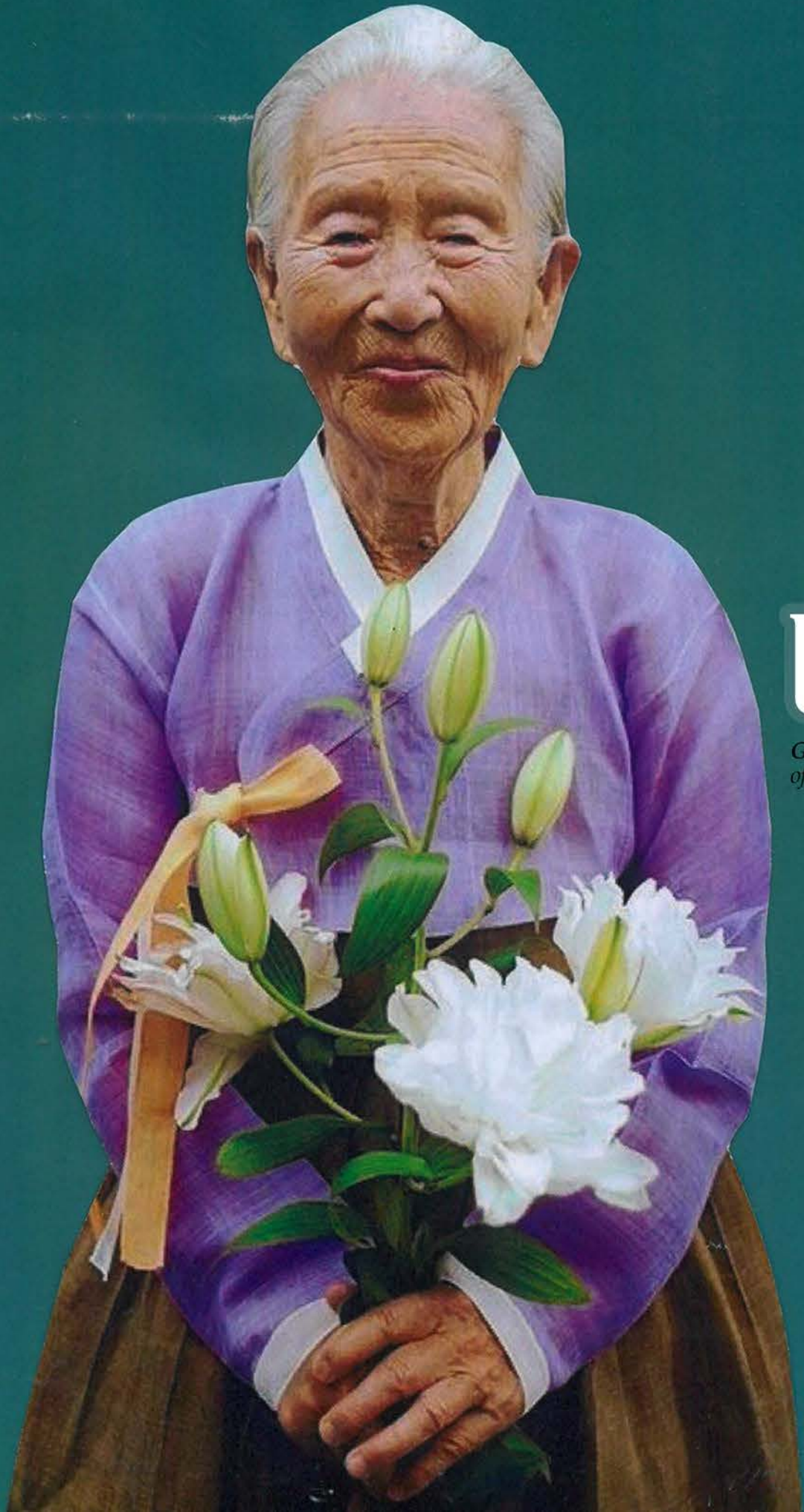


“The Time of Enlightenment”

I focus on my personal stories and cultural elements for this graduation collection. “The most personal is the most creative.” Martin Scorsese said it. Therefore, I did a personal primary research on my grandmother. This is an interesting starting point. The mood, colour, silhouette, and printing ideas of the overall collection were inspired by the appearance of Korean society before the 1950s, in which a beautiful harmony of Eastern culture, especially Korean and Western cultures, was achieved. In order to develop creative and innovative silhouettes, collage and stand work were used. Through creative thinking and hundreds of design processes, the most personal and most creative designs were created. In addition, we tried to integrate the concept and collection into one through research on colour and the balance of the overall collection.

I did research and effort on clever pattern cutting to develop creative and innovative designs into 3D. Innovative pattern cutting and detailing with craftsmanship, especially creating my own shoulder pad and manufacturing technique. I thought of a printing design that was simple yet creative and fits the luxury market level. I have achieved this through the design development process to see if this fits well with my overall collection. In addition, I hope to apply various technical methods to my collection through the process of dyeing to be used for clothes such as shirts, and laser cutting, especially engraving, to my collection. Experiences and failures always develop me, and I hope to complete this collection very nicely and become a good starting point for my fashion designer’s career.

My collection is composed of warm atmosphere and beautiful colours. It consists of each outfit that is luxurious and wearable by selecting all-in-tones, and presents a new paradigm to men with innovative outer design. In addition, a little pattern printing design harmonizes with the collection to brighten the overall atmosphere. Above all, it shows a high degree of perfection in harmonizing my concept and collection through salons, hats, bags and flowers. Hopefully, if I’m running a catwalk show, I want to maximize the atmosphere of the collection and express the impression of the concept through music by choosing the music of ‘Adios Nonino - Astor Piazzolla’ that I thought of as my collection music.



Dear Grandma.

*Grandma's Beautiful Colour and Peony(Moran) Flower
of Primary Concept Research*





First Lady-Lee Bulan(Francesca) She was First first lady in South Korea as call First National Grandma

Grandmother's

This graduation collection is about **Grandmother and Korean cultural aesthetic** as title's "The Time of Enlightenment". Starting point, my grandma and my grandpa when they love and farewell in Seoul, South Korea on before 1950s. My graduation collection to honor my grandmother.



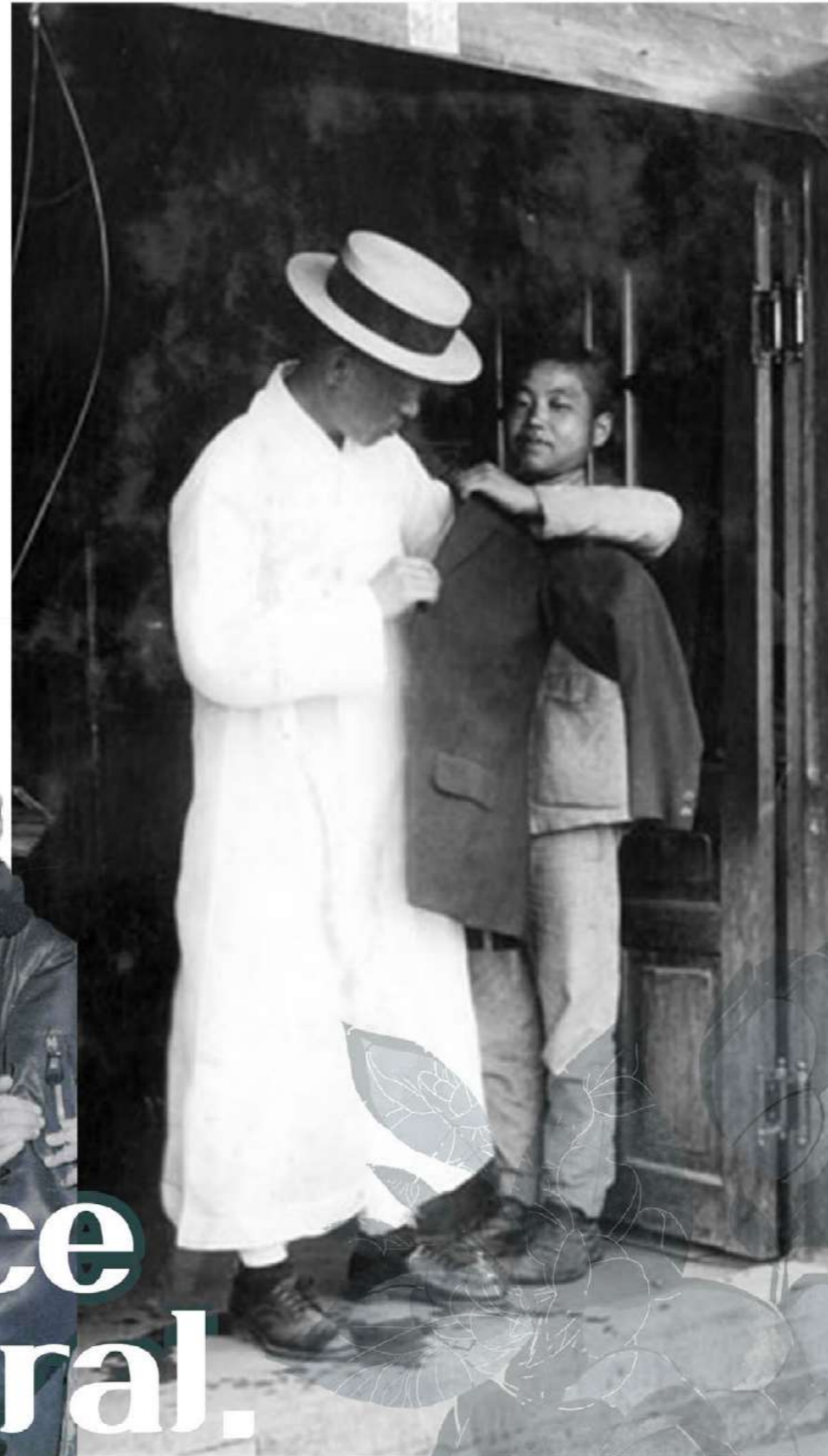
Traditional



Western Culture Came Into South Korea in 1950s
Beautiful Harmony between Korean Traditional with Modern Western

Before 1950s South Korea

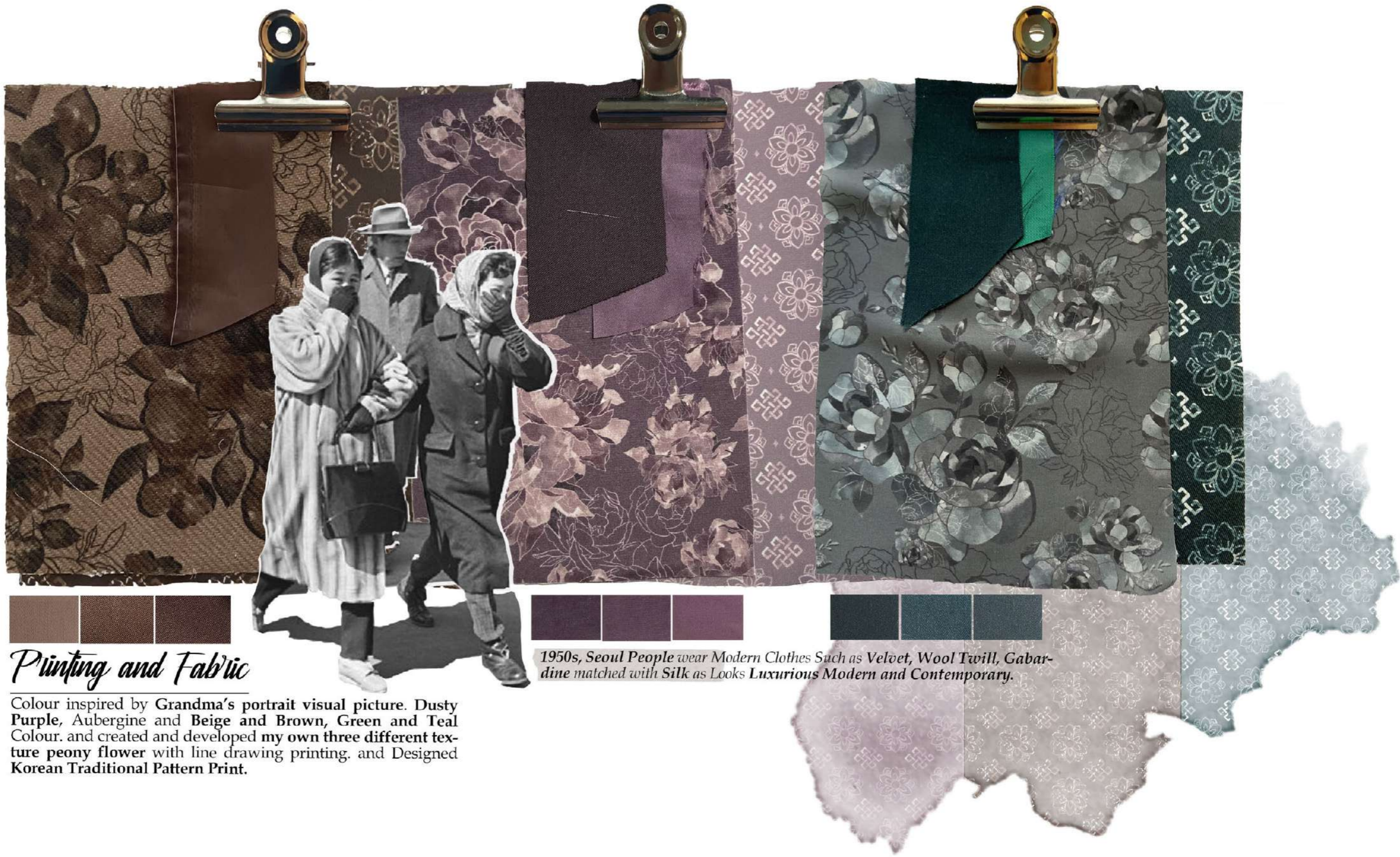
It is set in the time when my grandmother was in love with my grandfather as a young. Before 1950, Seoul was a beautiful era when Western culture and traditional Korean culture coexisted. I was inspired by silhouette of the people of this era combined with the East and the West in city of Seoul



Coexistence Cultural.

CONCEPT
"The Time Of Enlightenment"
KYLE DE CROWN





Printing and Fabric

Colour inspired by Grandma's portrait visual picture. Dusty Purple, Aubergine and Beige and Brown, Green and Teal Colour. and created and developed my own three different texture peony flower with line drawing printing. and Designed Korean Traditional Pattern Print.

1950s, Seoul People wear Modern Clothes Such as Velvet, Wool Twill, Gabardine matched with Silk as Looks Luxurious Modern and Contemporary.



PRINTING DEVELOP

The Time Of Enlightenment

KYLE DE CROWN

ASYMETRICAL SILHOUETTE



The creation of a new innovative Asymmetrical silhouette through collage of modern Western tailoring and Korean traditional hanbok

Silhouette Development

In Korea in 1950s, it was a beautiful era in which modern and traditional coexisted as Western culture entered Korea. Therefore, a new silhouette of men's wear was created by being inspired by the mix of Korean traditional clothes and Western clothes.

DESIGN DEVELOP

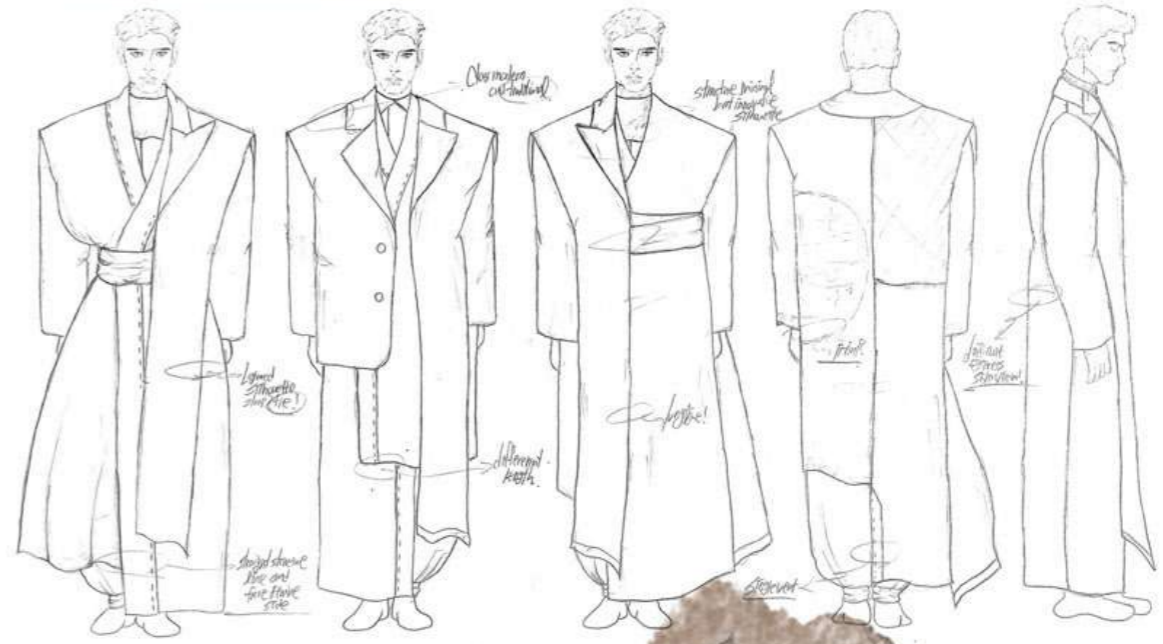
The Time Of Enlightenment
KYLE DE CROWN



Stand Work

Inspired by knot detail of Korean traditional clothes, I found a new innovative silhouette through the stand work. Creating creative silhouettes by tying knots in various directions on Western tailors

Knot detail in Korean traditional clothes and a mixture of avant-garde silhouette and contemporary western silhouette



KNOT TIED DETAILS



DESIGN DEVELOP

"The Time Of Enlightenment"
KYLE DE CROWN

Expresses luxury and elegant menswear collections that fit the market level through all-in-tone colors with Beautiful Peony Flower Printing.



Develop First Outfit

The coat silhouette found through collage work and stand work was converted into 3D realisation. Creative and innovative pattern cutting, various patterns and layers into one coat.



The coat was divided into three parts and work was started. And by sewing all parts into one, an innovative coat is created.



Develop First Outfit

Long-length, innovative coat features a velvety fabric with Peony flower prints in aubergine purple colour tone. printing scale to maximize elegance. and ribbon details were tied belt at the back to point details suitable for my concept. A beautiful harmony of genderless details with masculine cutting.

DESIGN DEVELOP

"The Time Of Enlightenment"
KYLE DE CROWN

The Beige brown all-in-tone Peony-printed suit and wool twill fabric express a classic and antique traditional feel. Contrast with the first outfit.



Develop Second Outfit

Creating a tailored jacket with an **Asymmetrical silhouette** by collage with cropped length of Korean women's traditional clothing and a Western classic suit. Picked lapel was chosen for luxury and classic. There is a **no-collar** design on the **inside of the cropped layered part**.

DESIGN DEVELOP

The Time Of Enlightenment
KYLE DE CROWN



Develop third Outfit

Inspired by shoulder-line and sleeve silhouette of Grandmother's traditional clothes, blouse sleeve silhouette and the unique shoulder silhouette were created.

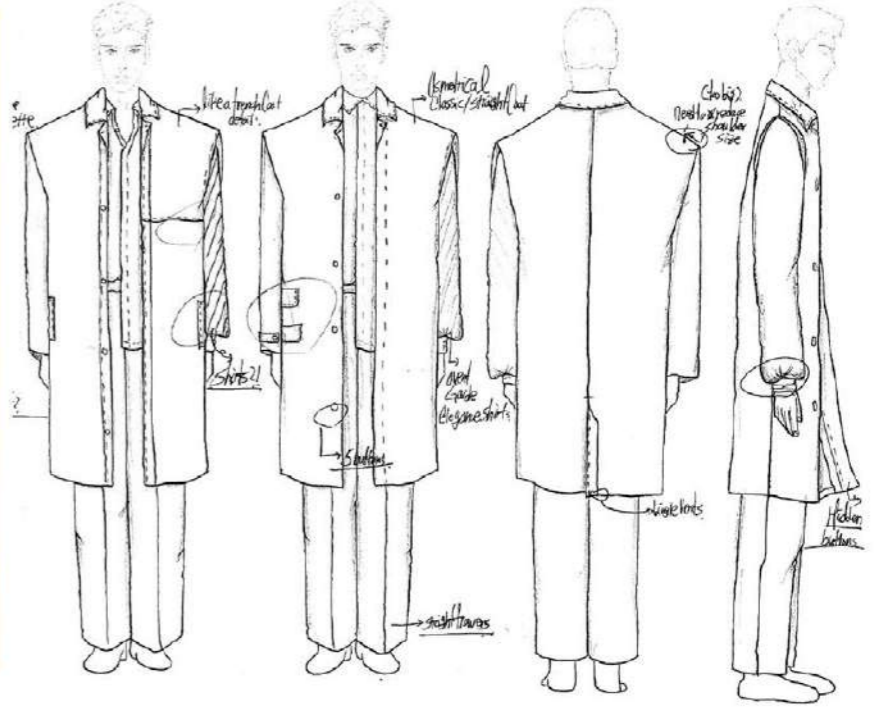
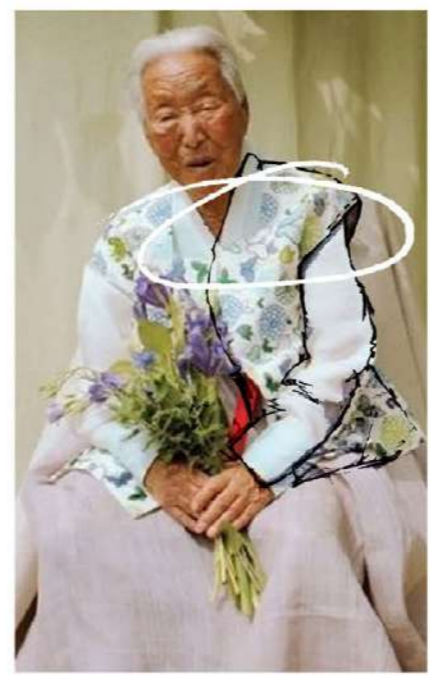
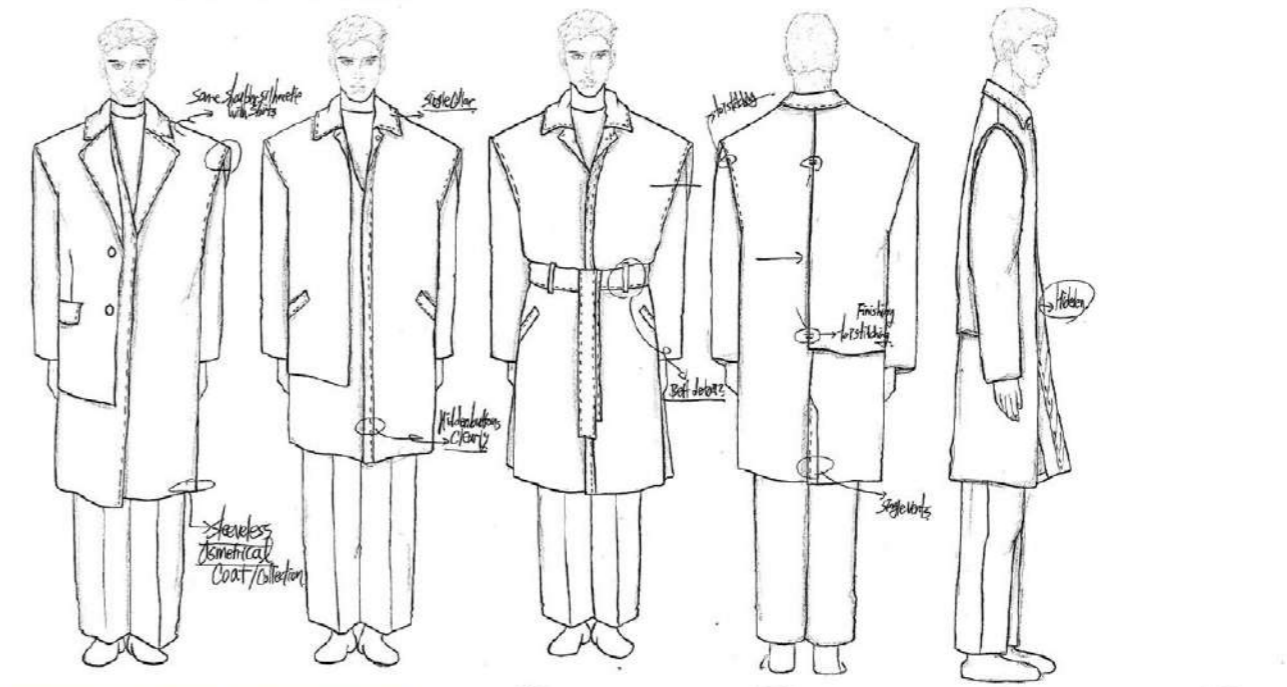


Unique Shape of Shoulder line of shirts design. Satin Clifton Wash Crepe fabric with Teal green, and darker Brown Colour with Printing Design.



Develop Fourth Outfit

Inspired by **single collar coat silhouette** and **sleeveless silhouette** of stand work and **grandmother's traditional clothes**. Sleeveless coat is designed to perfectly match with blouse sleeve shirts.



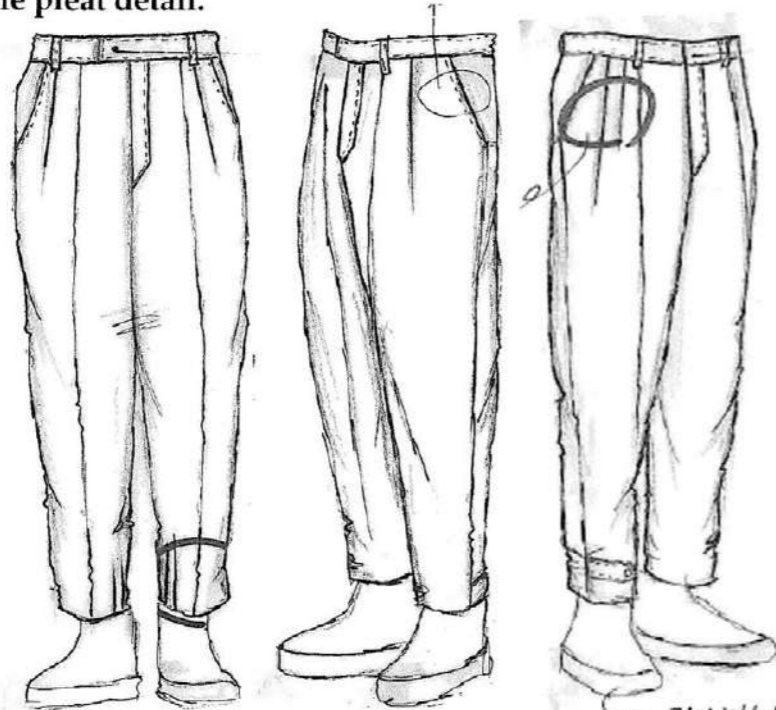
Asymmetrical sleeveless silhouette of mid length trench coat through sophisticated pattern cutting. also use Gabardine twill fabric as dark teal green colour with dusty light teal green colour.



straight wide length

Trouser's Develop

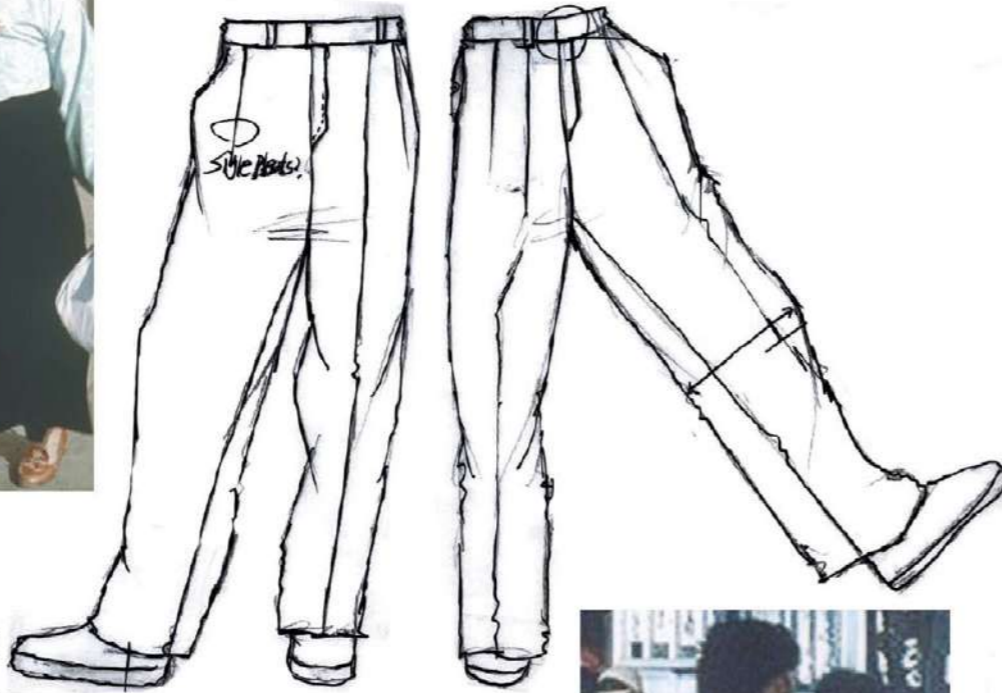
Inspired by Korean men's trousers in the 1950s, wide-length trousers were designed. In addition, cropped-length tapered trousers were designed by inspiration from the traditional Korean trousers silhouette. I cut the trousers more boldly through double pleat detail.



Perfect matched with checkered boots



check boots



Perfect fit of trousers through sophisticated pattern cutting. also use Gabardine, Wool-blended twill fabric as matched with outerwears colour.



DESIGN DEVELOP

"The Time Of Enlightenment"
KYLE DE CROWN



FINAL LINE UP
The Time Of Enlightenment
KYLE DE CROWN



COLOUR RANGE PLAN

The Time Of Enlightenment
KYLE DE CROWN

Fabric

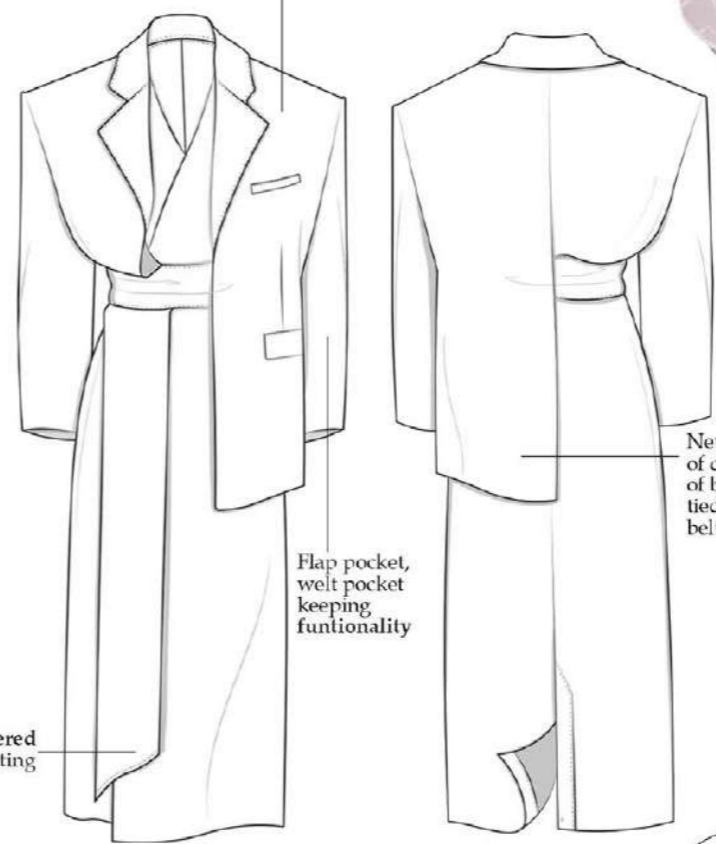
Matted finishing Velvet Fabric for Coat, Printed Silk fabric for Shirts, Wool blended Gabardine Fabric for Trousers, Poly Lining



Adios Nonna

All in tone of whole prining of Aubergine and Light purple, Eggplant Colour will be express extremely elegant outfit of collection.

Main innovative silhouette of coat. Three part of pattern make just one.

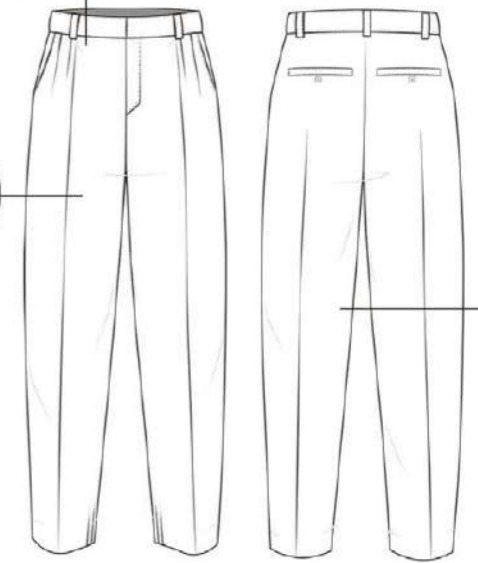


Flap pocket, welt pocket keeping functionality

New style of design of back with tied ribbons belt

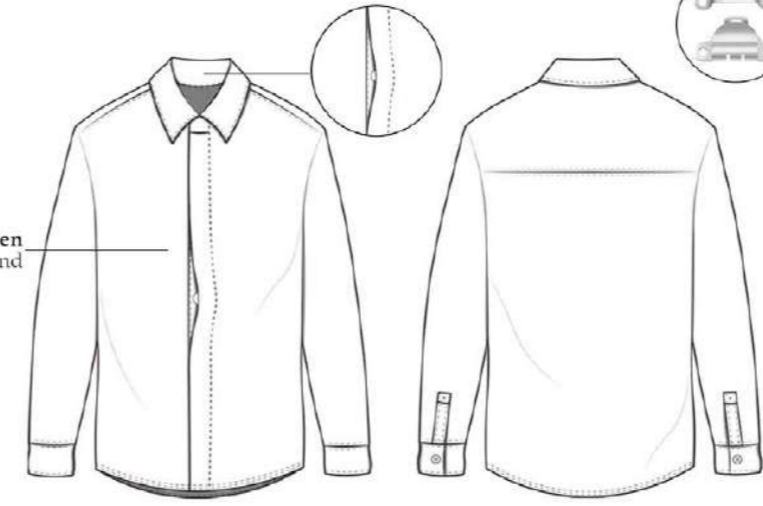
Double layered pattern cutting

Trousers hook and Double pleates for bold silhouette



Tapered fitted trousers with double pleats, bold Silhouette

3cm of Hidden buttons stand



OUTFIT BREAKDOWN

"The Time Of Enlightenment"
KYLE DE CROWN

Fabric

Wool Twill Fabric for Whole suit set-up,
Satin chiffon crepe Fabric for Shirts, Poly Lining



Adios Nonna

All in tone of whole prining of Classic and Traditional Beige, Brown Colour will be express extremly Classic and Luxury outfit of collection.

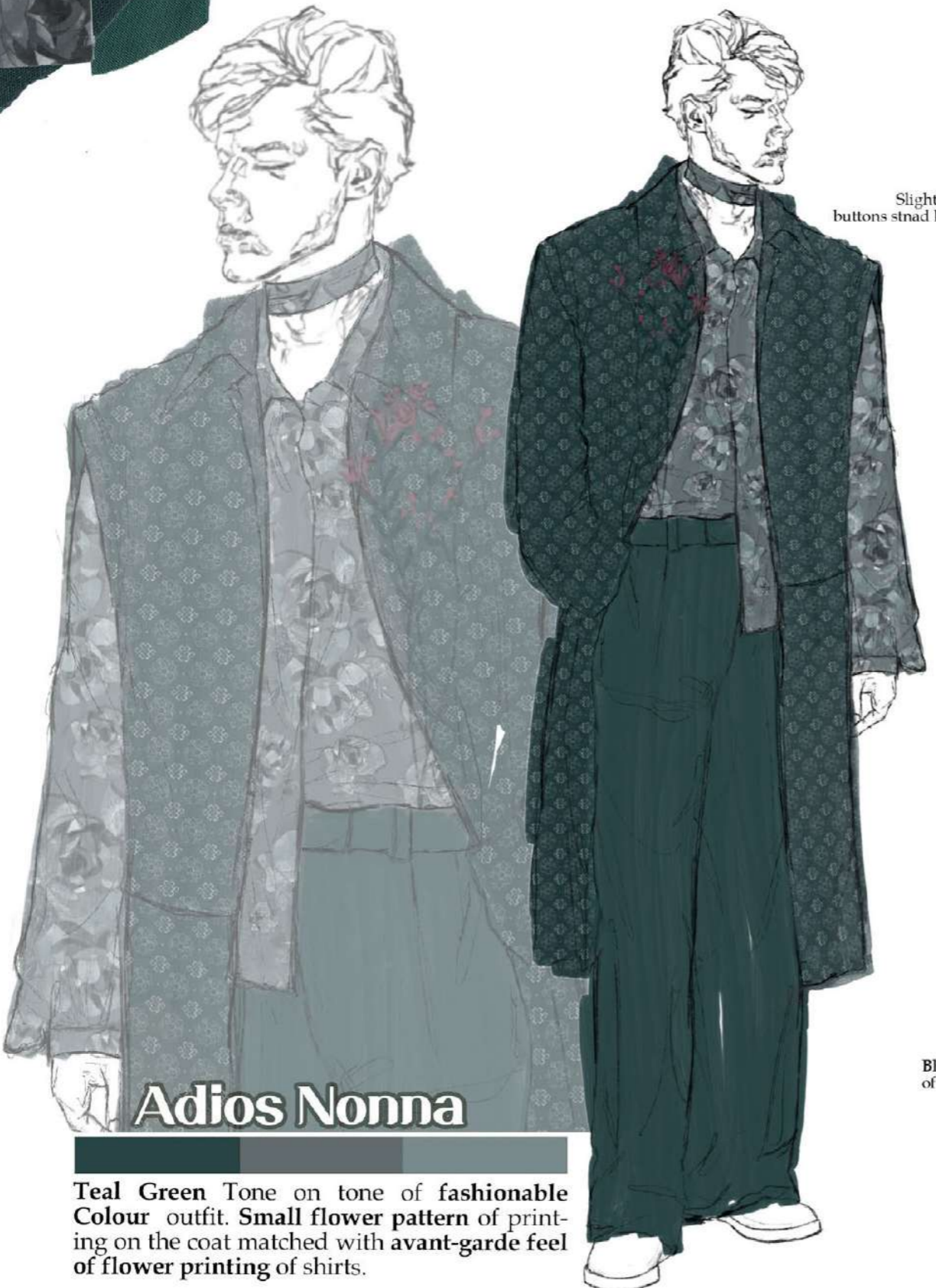
OUTFIT BREAKDOWN

"The Time Of Enlightenment"
KYLE DE CROWN



Fabric

Twill Gabardine Fabric for Sleeveless coat, Crepe Fabric for Shirts blouses, Wool Blended Gabardine Fabric for Trousers, Poly Lining



Adios Nonna

Teal Green Tone on tone of fashionable Colour outfit. Small flower pattern of printing on the coat matched with avant-garde feel of flower printing of shirts.

Slightly wide buttons stnad hidden.



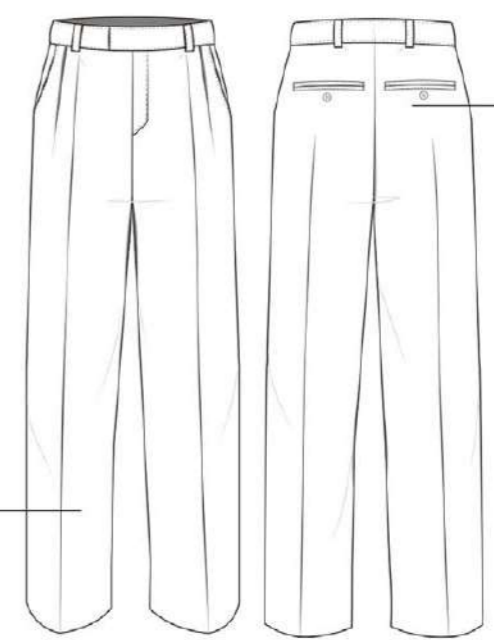
Sleeveless trench coat design with waist length cropped layered pattern. styling with blouses shirts.



Double york on the back

Blouses sleeve shape of loose fit shirts

Wide length of trousers with draped shape on the bottom of trousers with single pleats.



Extra Buttons on the back under the twin rips pocket.



Fabric

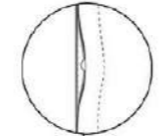
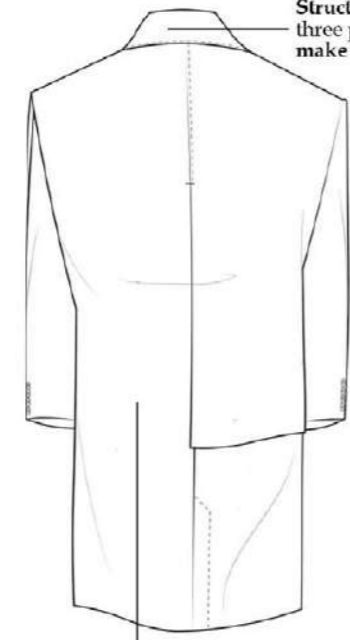
Matted finishing Velvet Fabric for Coat, Printed Silk fabric for Shirts, Wool blended Gabardine Fabric for Trousers, Poly Lining



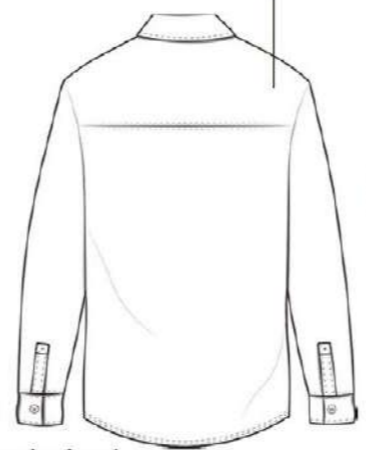
Innovative coat design. designd mixed eastern silhouette and western silhouette



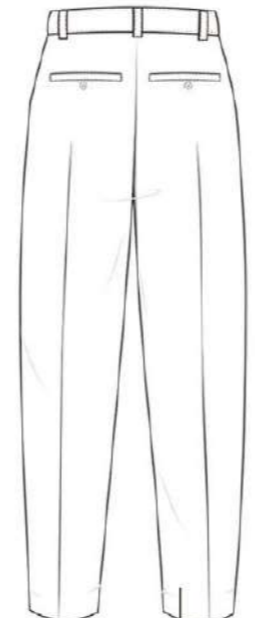
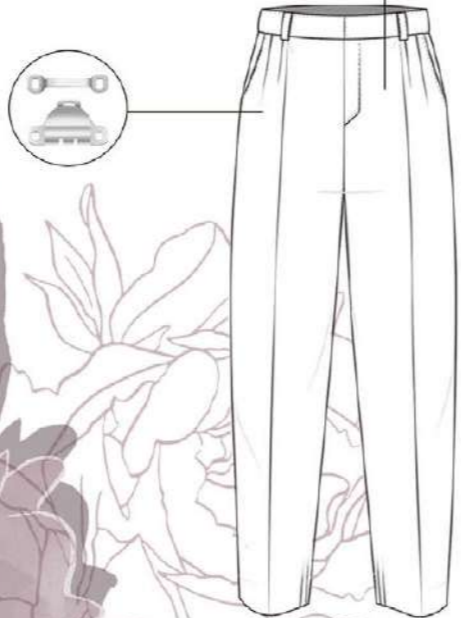
Structured pattern three part of pattern make one coat



Regular fit shirts with flower printing



Trousers hook and Double pleates.



Tapered fitted trousers with double pleats. bold Silhouette



Adios Nonna

Teal Green Tone on tone of fashionable Colour outfit. Small flower pattern of printing on the coat matched with avant-garde feel of flower printing of shirts.



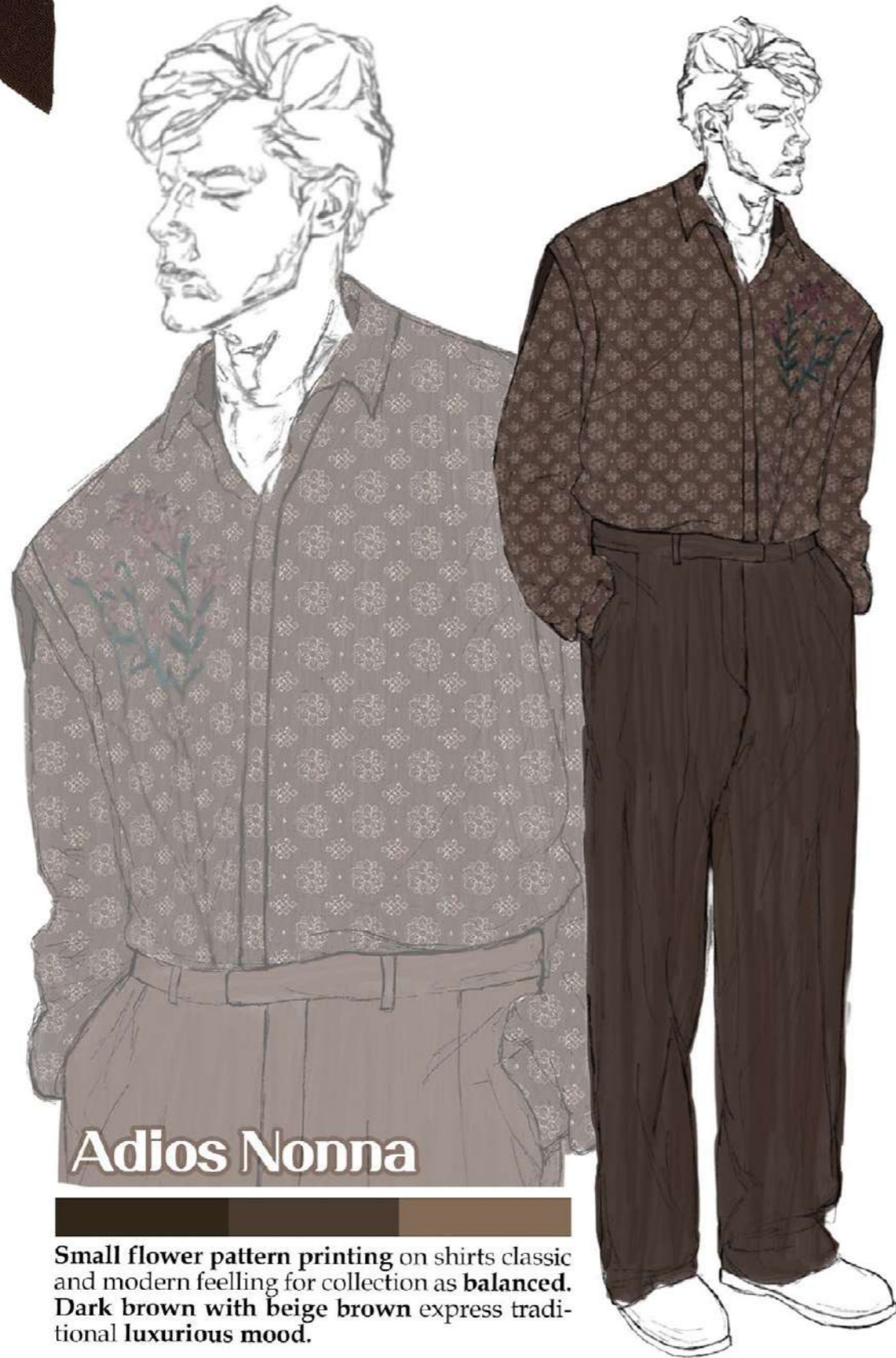
OUTFIT BREAKDOWN

The Time Of Enlightenment
KYLE DE CROWN



Fabric

Matted finishing Medium Weight Silky Crepe Fabric for Shirts blouses, Wool Blended Gabardine Fabirc for Trousers

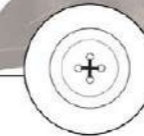
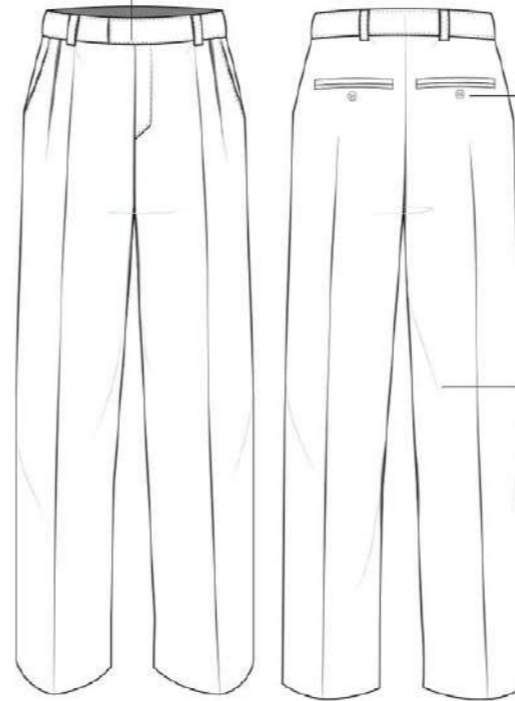


Adios Nonna

Small flower pattern printing on shirts classic and modern feelling for collection as **balanced**. Dark brown with beige brown express traditional luxurious mood.



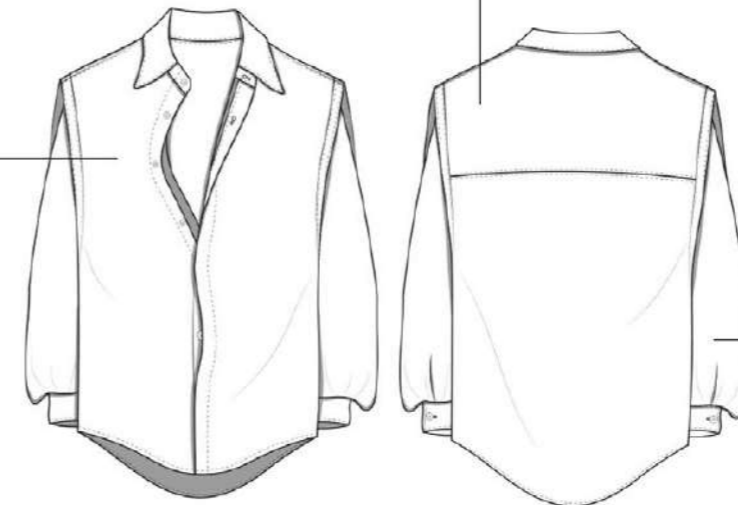
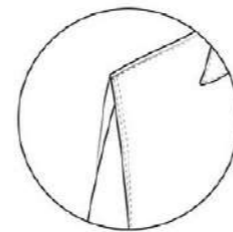
Trousers hook and Single pleates for Straight draped silhouette



Extra Buttons on the back under the twin rips pocket.

Wide length of trousers with draped shape on the bottom of trousers with single pleats.

Unique and Innovative shoulder line of shirts. This shoulder line from grandma's traditional clohtes.



Blouses sleeve shape of loose fit shirts triple pleats on the cuffs. blooming upper cuffs silhouette.

OUTFIT BREAKDOWN

"The Time Of Enlightenment"
KYLE DE CROWN

Fabric

Poly Twill Fabric for Printed Cropped Jacket, Knitted fabric for Jersey, Wool Blended Gabardine Twill Fabric for Trousers

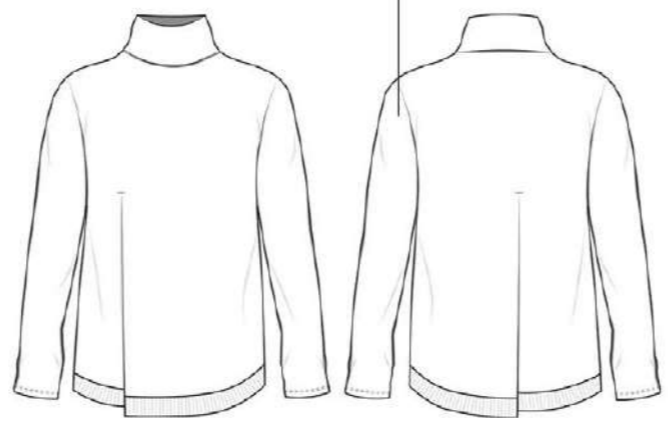
Cropped structured tailored jacket with pickel lapel and collar



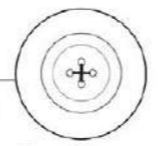
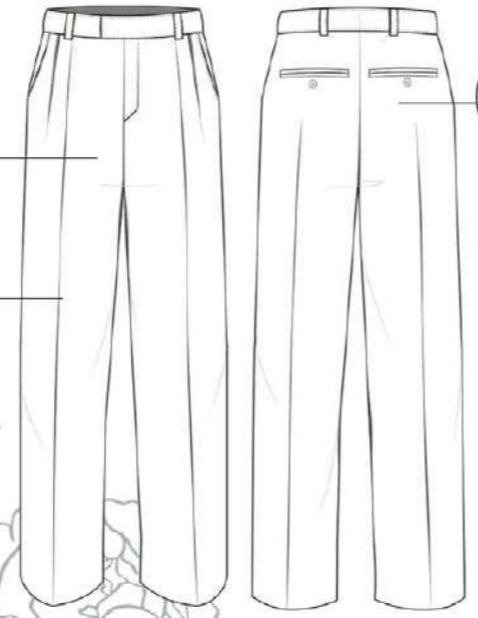
Double breasted silhouette with single vents on the back side.



Asymmetrical silhouette of jersey with roll neck, unbalanced hem line, finishing sleeve hem by twin needle.



Wide length of trousers with draped shape on the bottom of trousers with single pleats.



Extra Buttons on the back under the twin rips pocket.



Adios Nonna

Teal green tone on tone of fashionable colour outfit. Elegance flower printing cropped jacket with asymmetrical silhouette of jersey with light tone of teal green.



OUTFIT BREAKDOWN

The Time Of Enlightenment
KYLE DE CROWN



KYLE JEONG

NOTTINGHAM TRENT UNI.

“The Time of Enlightenments” F/W 2021 MENSWEAR

FT: 100% 200%

10079
0
10
271

5021
537
824
444
693
693
543
708
534

45
45
103
40
283
278
507
702
675
54
125
74
34
58
11

Export...

Histo

ISO 200 54 mm f/80

Original Photo

Quick Dev

Saved Preset: Bonington Galler...

Crop Ratio: Original

Treatment: Color

White Balance: Custom

Tone Control: Auto

Exposure: [slider]

Clarity: [slider]

Vibrance: [slider]

Reset All

Keyword

Keyword

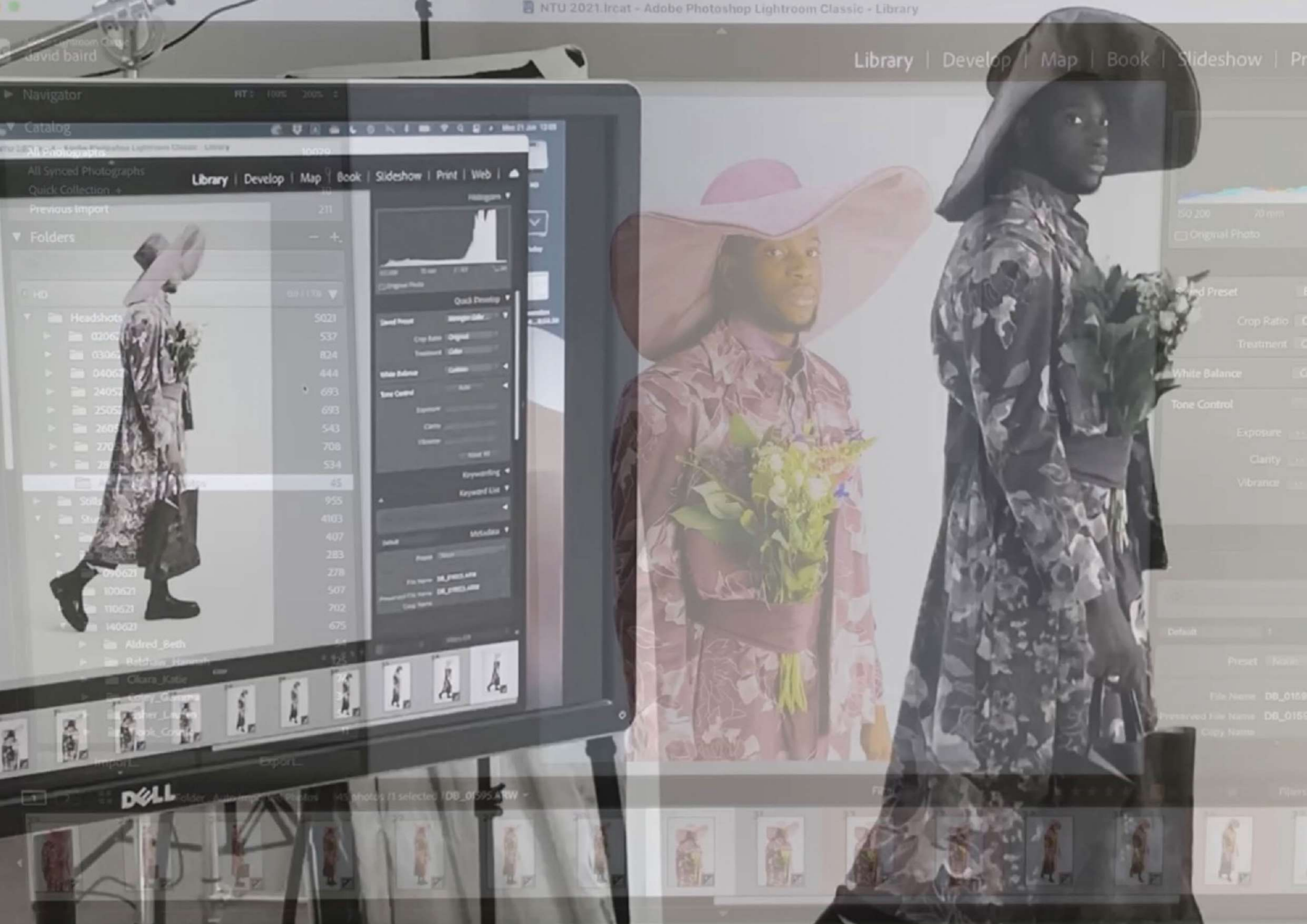
Default Metadata

Preset: None

File Name: DB_01585.ARW

Preserved File Name: DB_01585.ARW

Copy Name



David Baird

Library | Develop | Map | Book | Slideshow | Print

Navigator

Catalog

All Photographs 10070

All Synced Photographs

Quick Collection +

Previous Import 211

▼ Folders

HD	69 / 170
▼ Headshots	5021
▶ 030621	537
▶ 030621	824
▶ 040621	444
▶ 240521	693
▶ 250521	693
▶ 260521	543
▶ 270521	708
▶ 280521	534
▶ 090621	45
▶ 100621	955
▶ 110621	4103
▶ 120621	407
▶ 130621	283
▶ 140621	278
▶ 150621	507
▶ 160621	702
▶ 170621	675
▶ Aldred_Beth	
▶ Redfox_Hannah	
▶ Clara_Katie	
▶ Lucy_Gloria	
▶ Oliver_Laura	
▶ Mark_Craig	

Histogram

Quick Develop

David Preset

Crop Ratio Original

Treatment Color

White Balance Custom

Exposure Control

Exposure

Clarity

Vibrance

Keywording

Keyword List

Metadata

File Name DB_0159_A1W

Preserved File Name DB_0159_A1W

Copy Name

Grid

100 photos (1 selected) DB_0159_A1W



ISO 200 70 mm

Original Photo

Presets

White Balance

Tone Control

Exposure

Clarity

Vibrance

Default

Preset

File Name DB_0159

Preserved File Name DB_0159

Copy Name

DELL



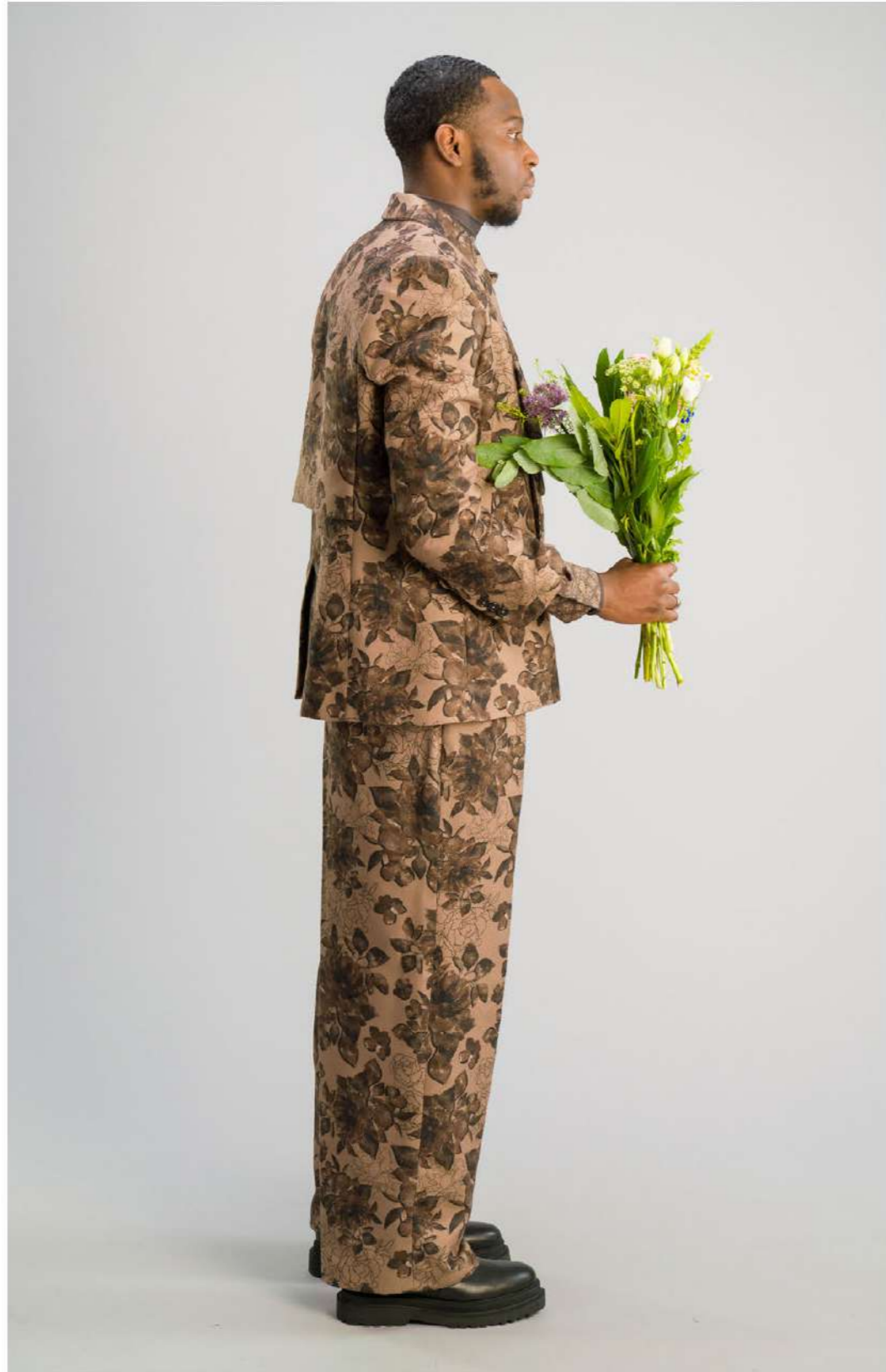
PHOTOSHOOT
"The Time Of Enlightenment"
KYLE DE CROWN



PHOTOSHOOT
"The Time Of Enlightenment"
KYLE DE CROWN



PHOTOSHOOT
The Time Of Enlightenment
KYLE DE CROWN



PHOTOSHOOT
The Time Of Enlightenment
KYLE DE CROWN

THE TIME OF ENLIGHTENMENT

Dear Grandma
I remember the memories with you



PHOTOSHOOT
The Time Of Enlightenment
KYLE DE CROWN



gettyimages
Joe Maher



gettyimages
Joe Maher

1323890216

GFW SHOW
The Time Of Enlightenment
KYLE DE CROWN

1323890464



GFW SHOW

The Time Of Enlightenment

KYLE DE CROWN 1323891287

Kyle Jeong

Nottingham Trent University



GFW SHOW
The Time Of Enlightenment
KYLE DE CROWN