



# TECH PACK

KYLE DE CRWON 2021 S/S COLLECTION

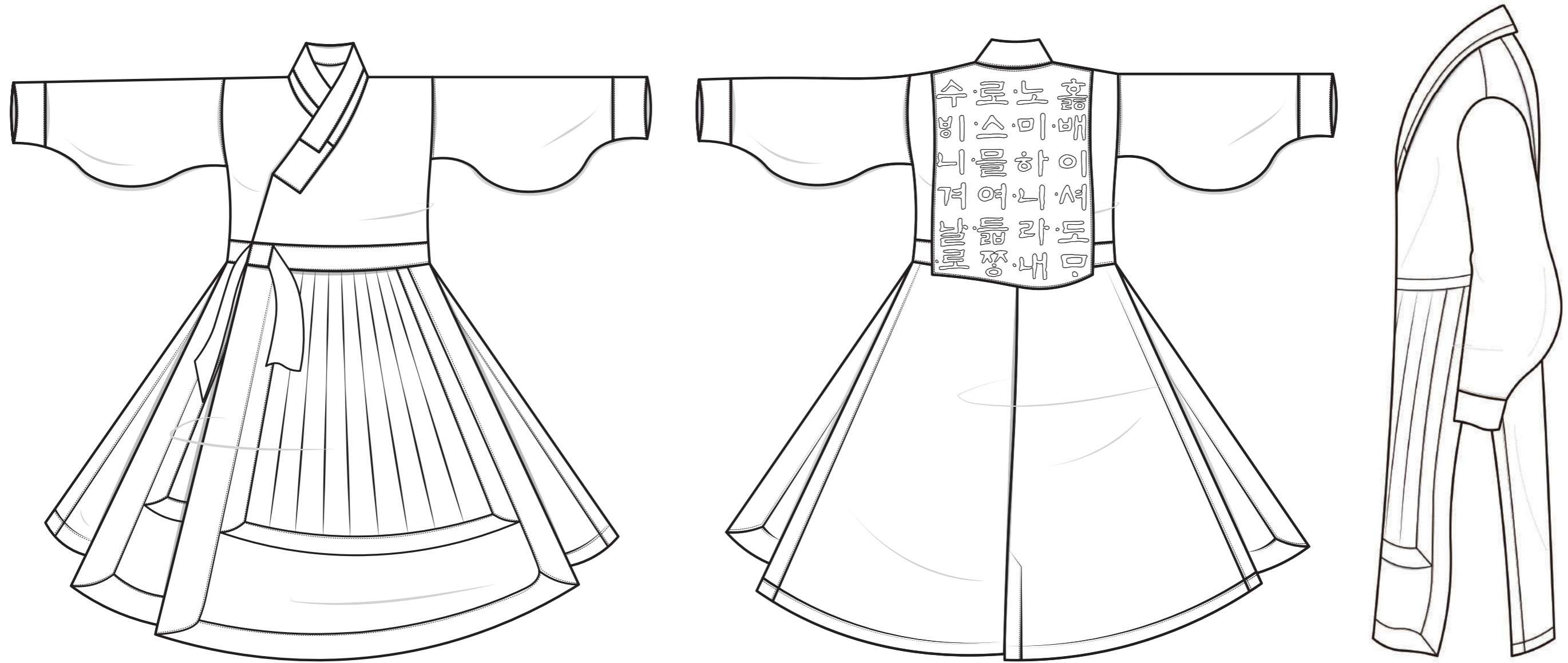
KYUYONG JEONG

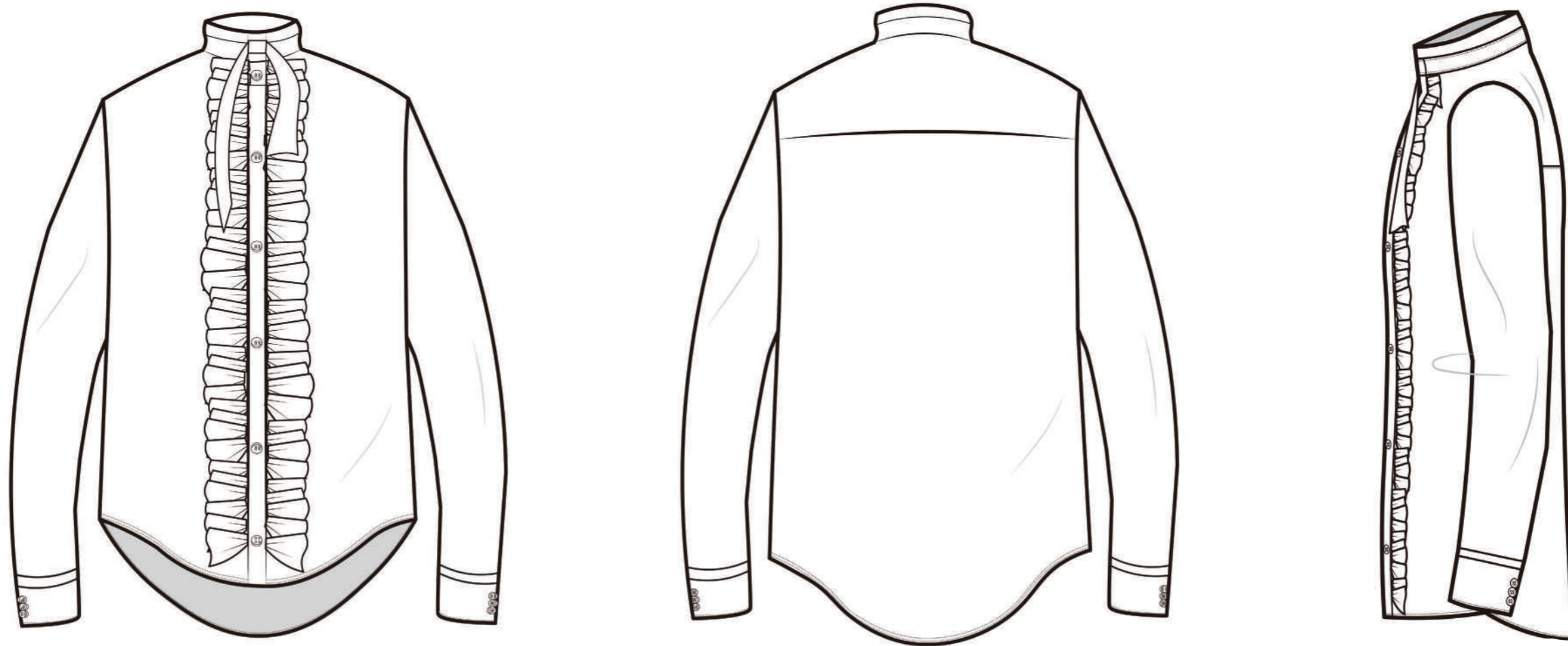


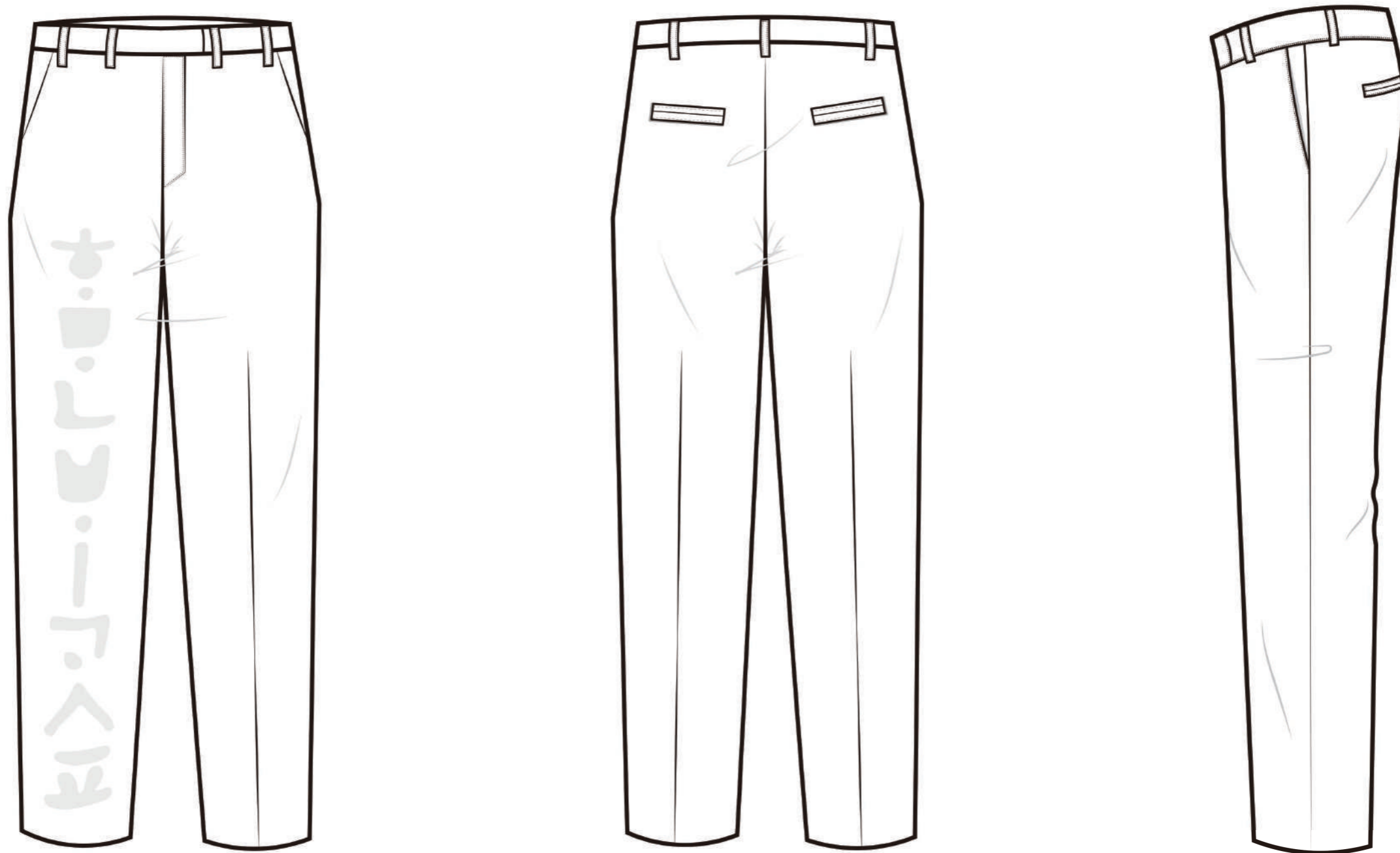
# BLACK AND WHITE CAD

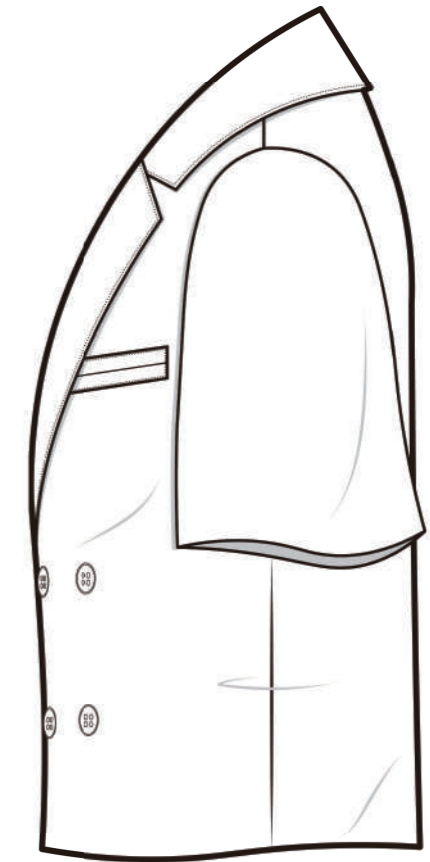
TECH PACK

KYLE DE CRWON 2021 S/S COLLECTION







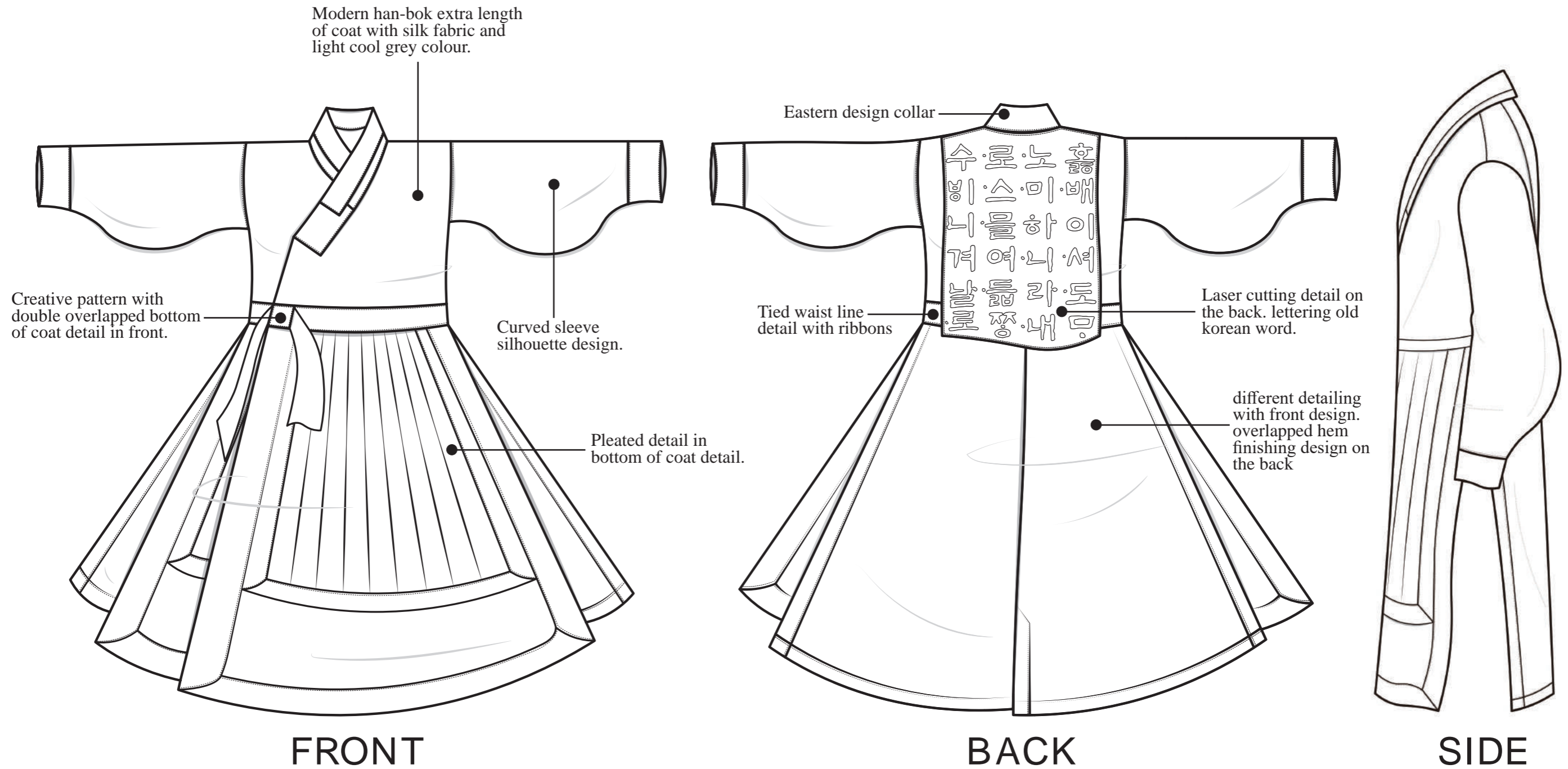




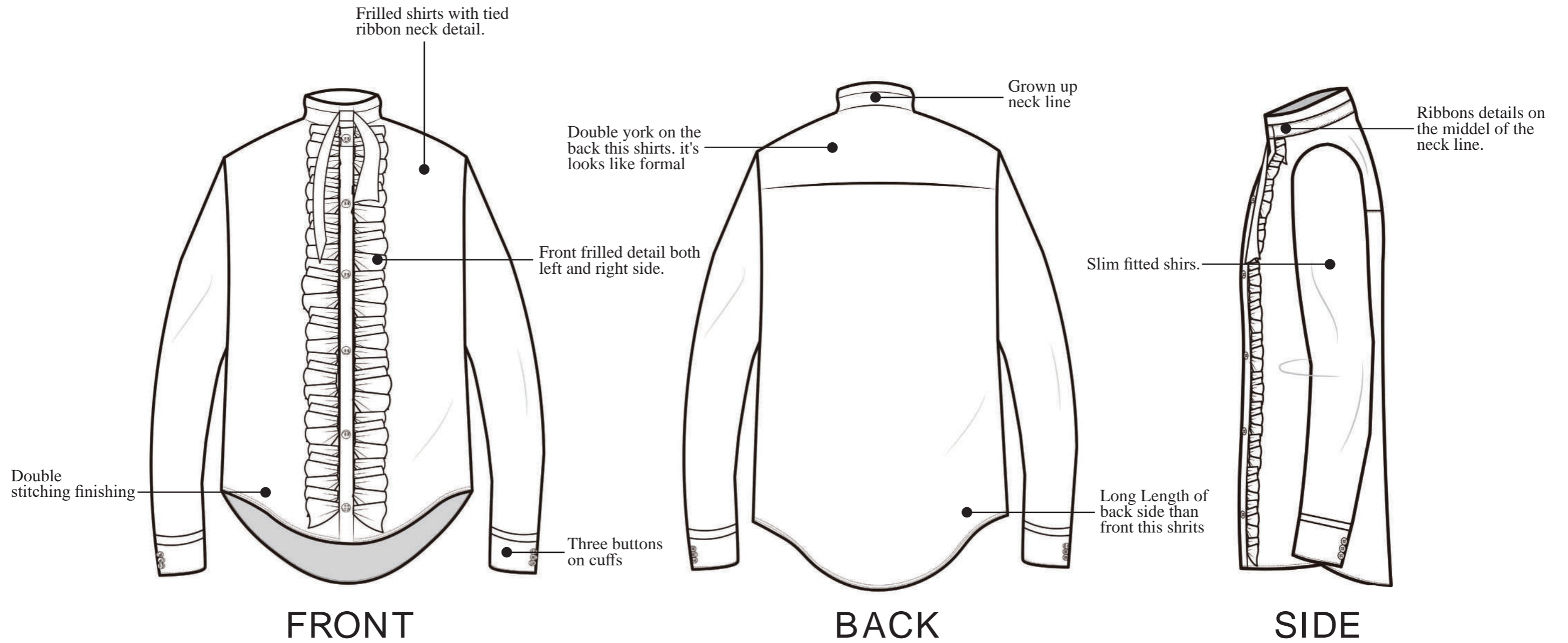
BLACK AND WHITE CAD  
WITH ANNOTATION

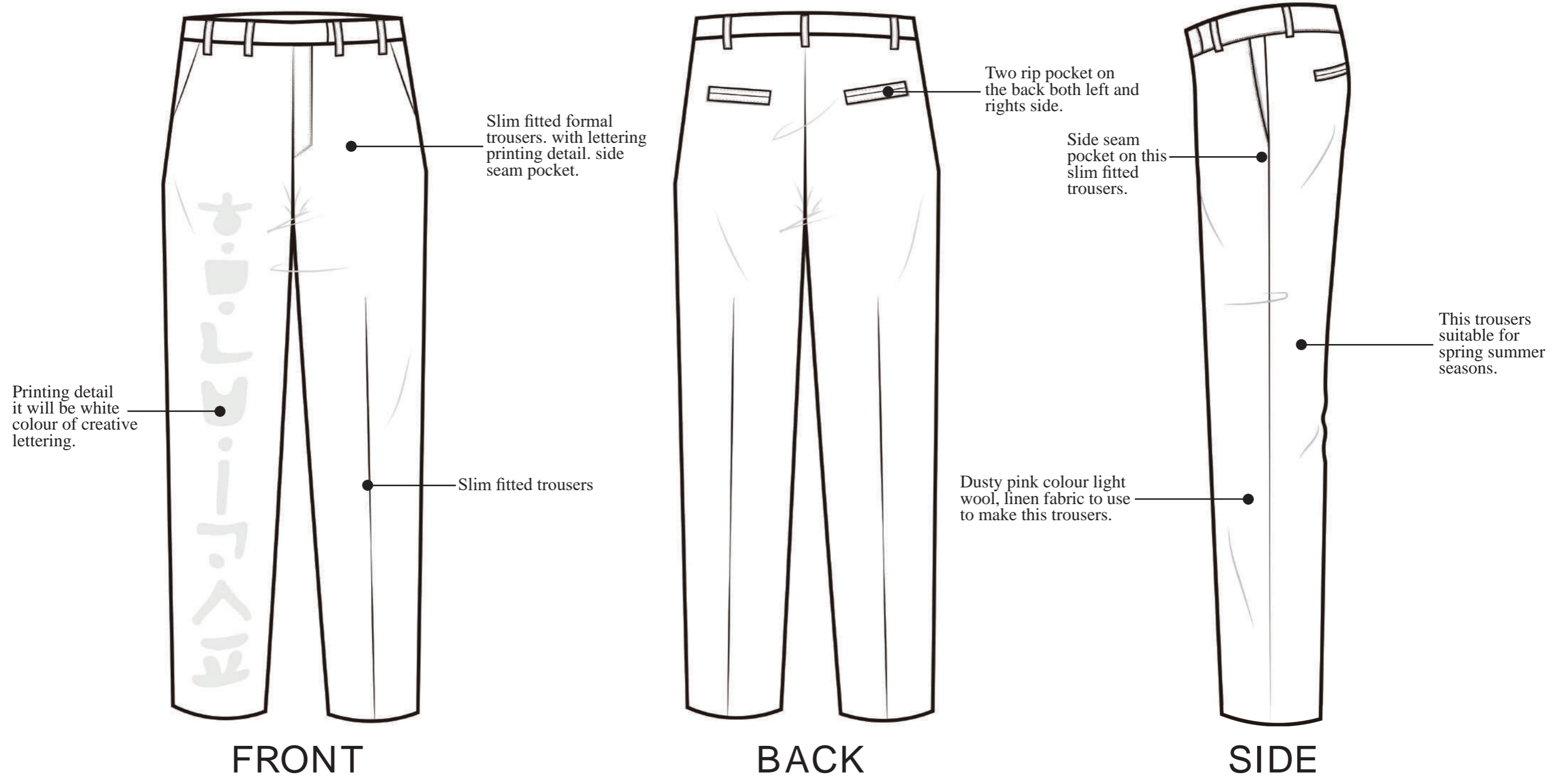
TECH PACK

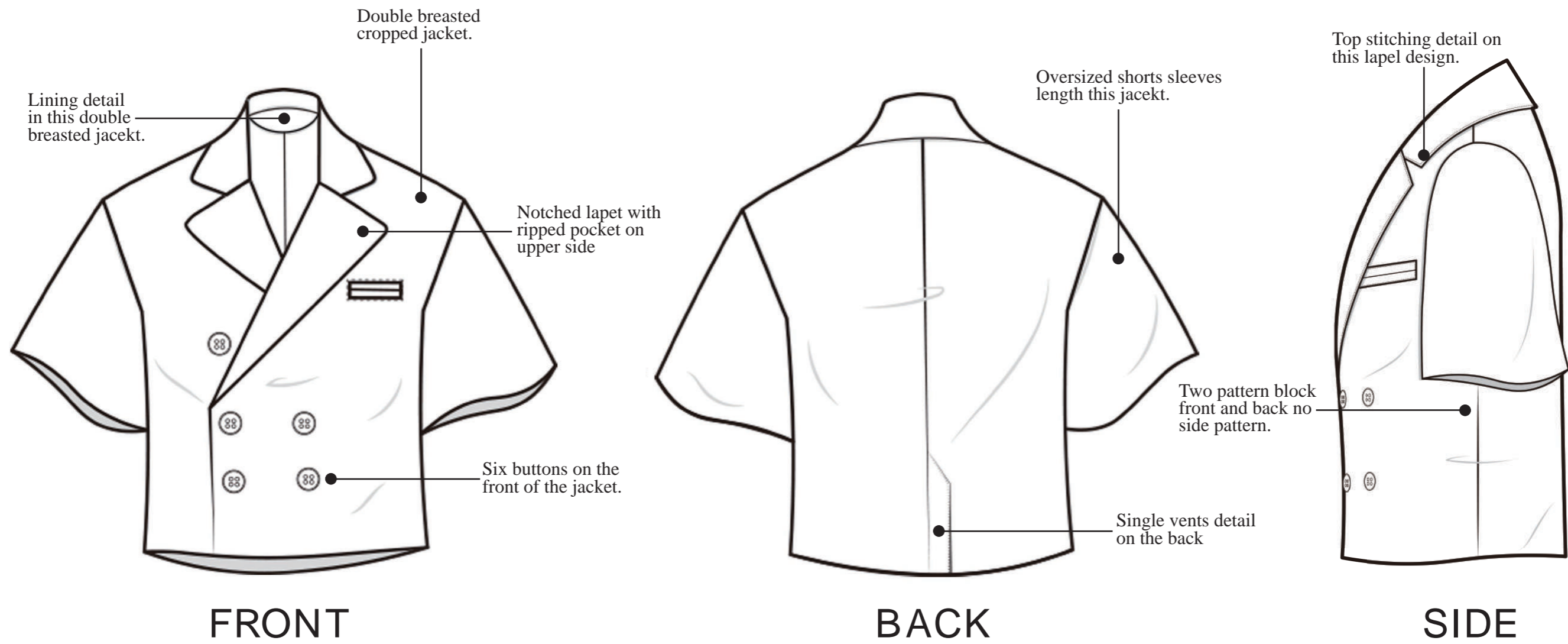
KYLE DE CRWON 2021 S/S COLLECTION









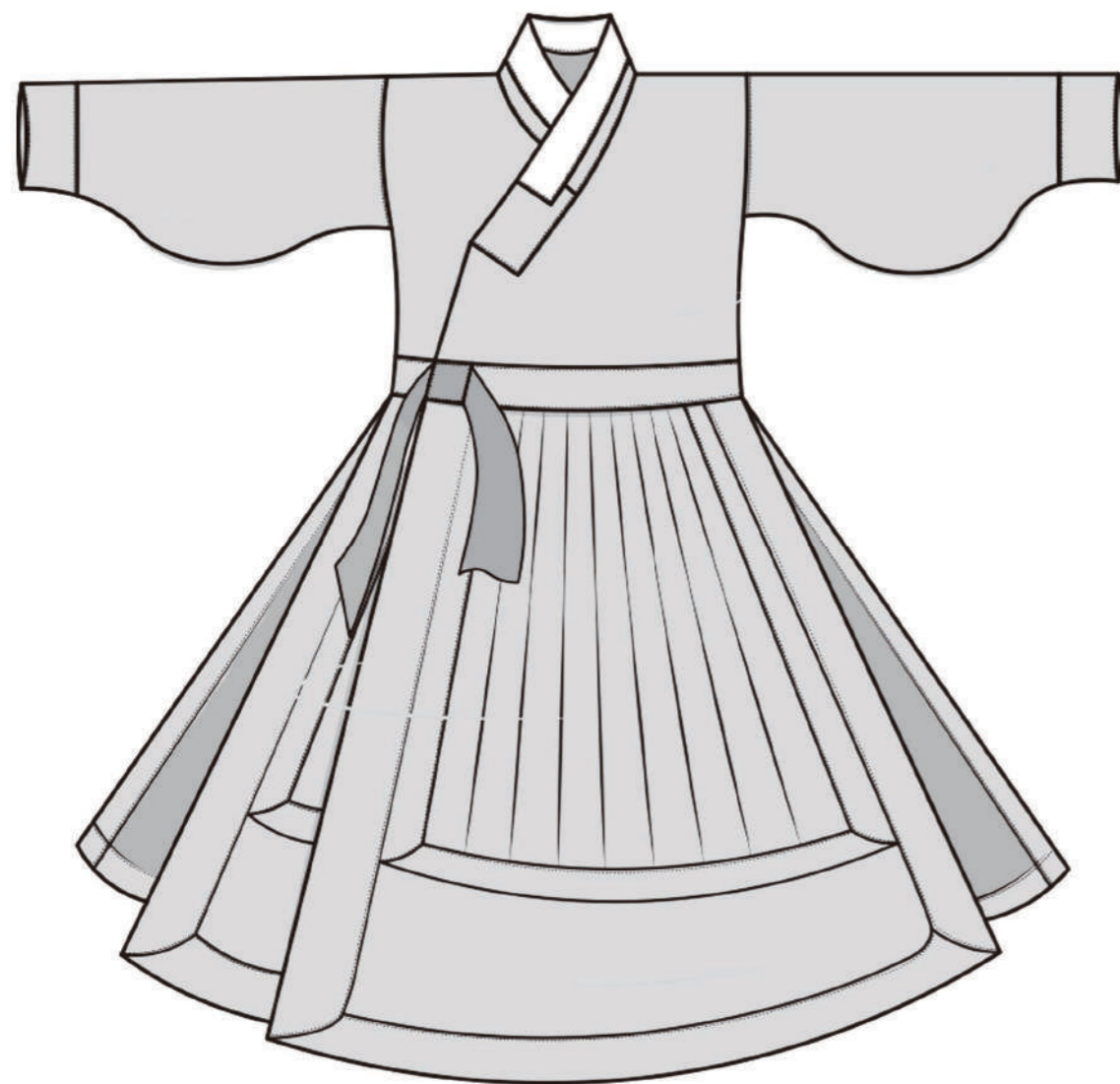




# FABRIC AND COLOUR SPECIFICATION

TECH PACK

KYLE DE CRWON 2021 S/S COLLECTION



-  **Fabric 1 for Collar**  
 Name: Malgichun  
 Cotton fabric (Korea)  
 Pasting on T/C cotton fabric 100%
-  **Fabric 2**  
 Name: Silk Myoung-ju fabric (Korea)  
 100% Silk fabric  
 Dyed Silver Sconce
-  **Fabric 3 for Ribbon**  
 Name: Silk Myoung-ju fabric (Korea)  
 100% Silk fabric  
 Dyed Silver Filigree
-  **Fabric 4 for Lining**  
 Name: Mul-Santan fabric (Korea)  
 100% Polyester  
 Dyed Silver Filigree
-  Pure White Colour  
 Pantone 000C
-  Silver Sconce Colour  
 Pantone 16-3850 TCX
-  Silver Filigree Colour  
 Pantone 17-3911 TCX

### ACID DYE

#### Fabric 2

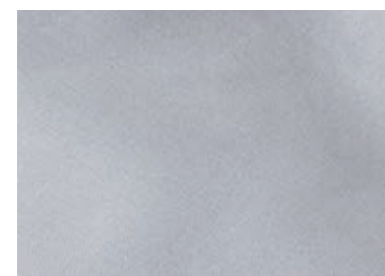
Dyed Process:

- 1) Ceravon Milling Yellow R 300%, 0.0307% , 3.3ml 1:2500
- 2) Ceravon Brilliant Red B, 0.0315%, 3.4ml 1:2500
- 3) Ceravon Milling Blue BL 150%, 0.0864%, 9.3ml 1:2500
- 4) Acetic Acid 96%, 0.1500mI/l, 1.6ml, 1:100
- 5) Glaubers Salt, 10.0000% 4.3ml, 1:10

#### Fabric 3 and 4

Dyed Process:

- 1) Ceravon Milling Yellow R 300%, 0.0026% , 2.8ml 1:25000
- 2) Ceravon Brilliant Red B, 0.0066%, 7.1ml 1:25000
- 3) Ceravon Milling Blue BL 150%, 0.0226%, 2.4ml 1:2500
- 4) Acetic Acid 96%, 0.1500mI/l, 1.6ml, 1:100
- 5) Glaubers Salt, 10.0000% 4.3ml, 1:10



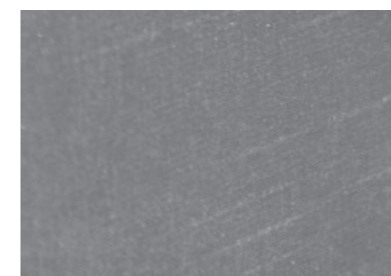
FABRIC 1



FABRIC 2



FABRIC 3

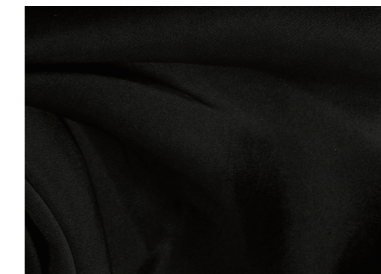


FABRIC 4



**Fabric 1**  
Name: Black Satin- Silk  
Chiffon Cotton,  
86% triacetate, 14%  
polyester; 100% silk

Black 6 C  
Pantone 19-4010



FABRIC 1



**Fabric 1**  
Name: Light wool linen fabric,  
60% Linen 40% Wool mixed



**Fabric 2 Lining for Trousers**  
Name: Stretchy Lining Fabric,  
100% Polyester



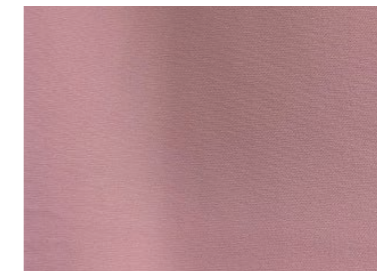
Pale Mauve (Dusty Pink)  
Pantone 15-1607 TCX



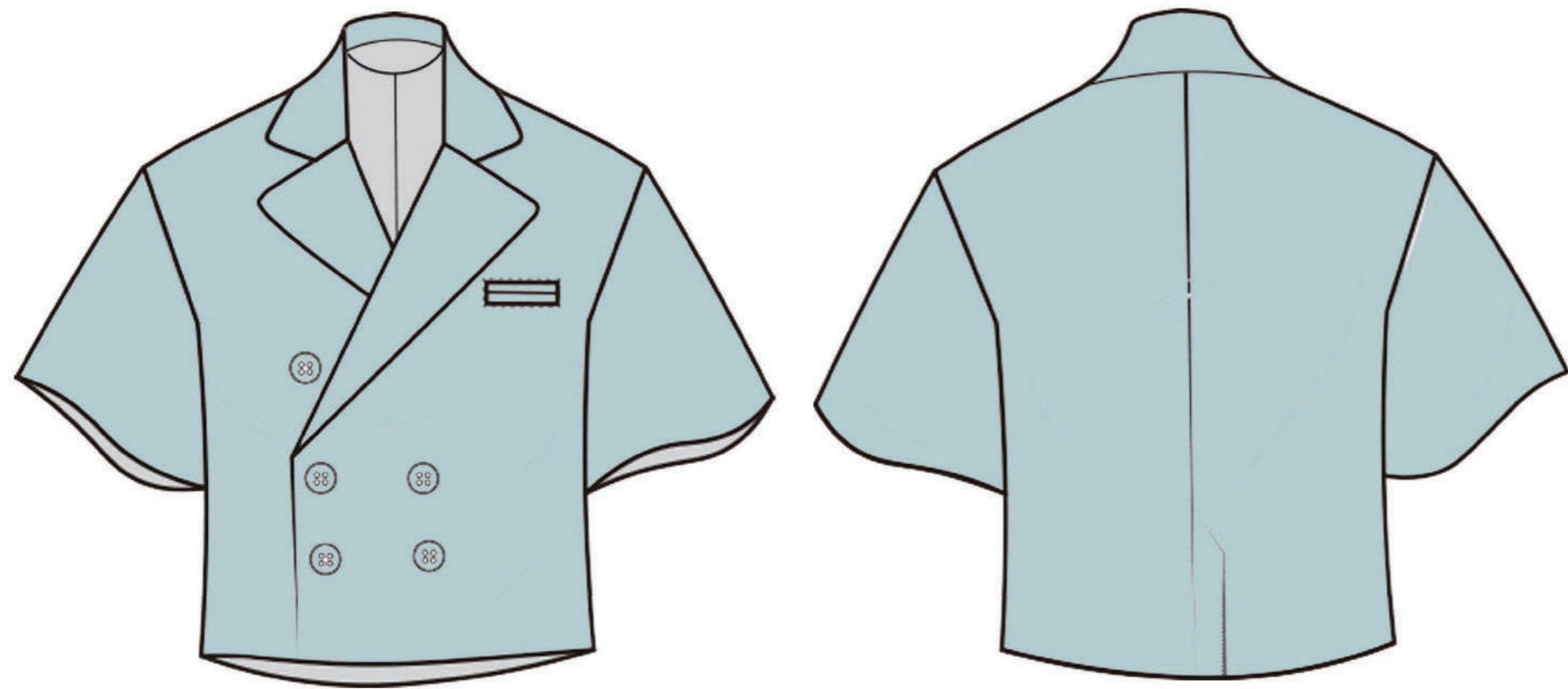
Dusty Rose  
17-1718 TCX



FABRIC 1



FABRIC 1



**Fabric 1**  
Name: Light wool linen fabric,  
60% Linen 40% Wool mixed



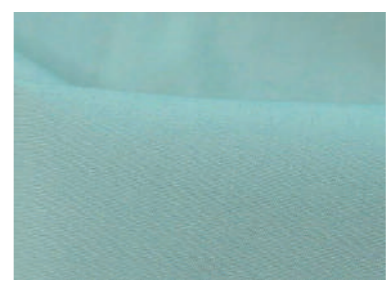
**Fabric 2 for Lining**  
Name: Anti-Static Lining Fabric,  
82% Acetate, 18% Polyamide



Pale Mauve (Dusty Pink)  
Pantone 15-1607 TCX



Silver Sponce Colour  
Pantone 16-3850 TCX



FABRIC 1



FABRIC 2

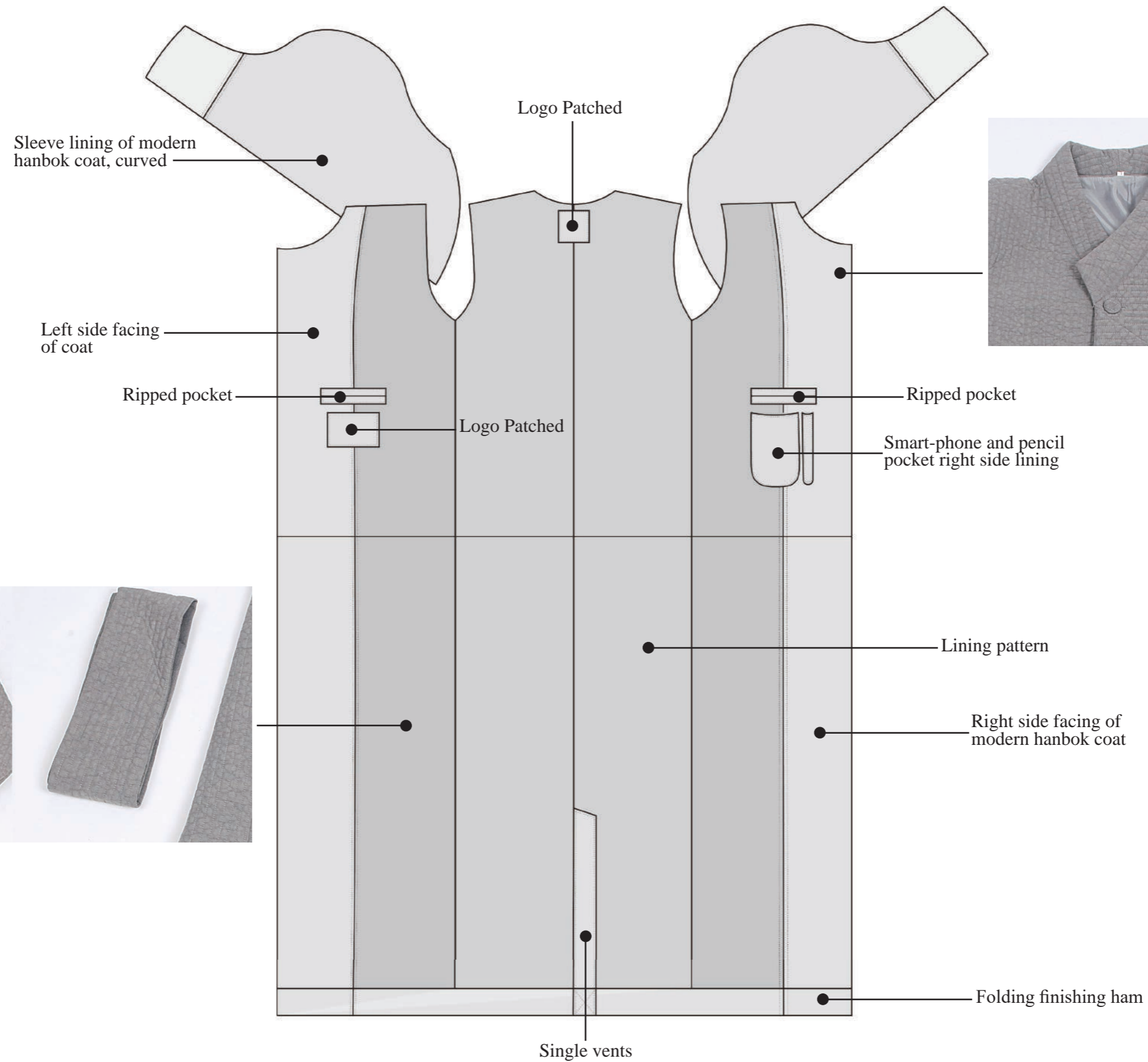




# LINING INTERIOR DESIGN

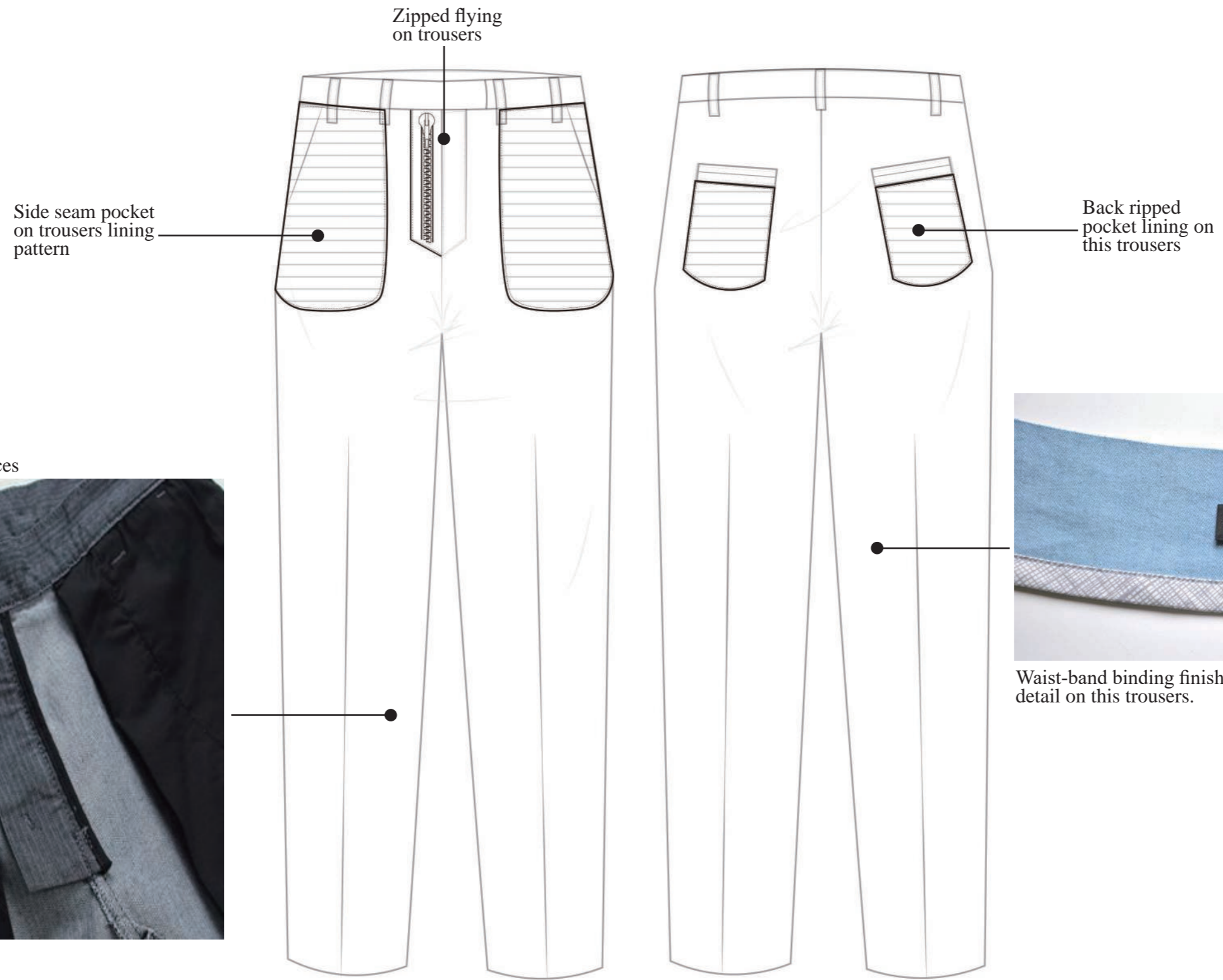
TECH PACK

KYLE DE CRWON 2021 S/S COLLECTION



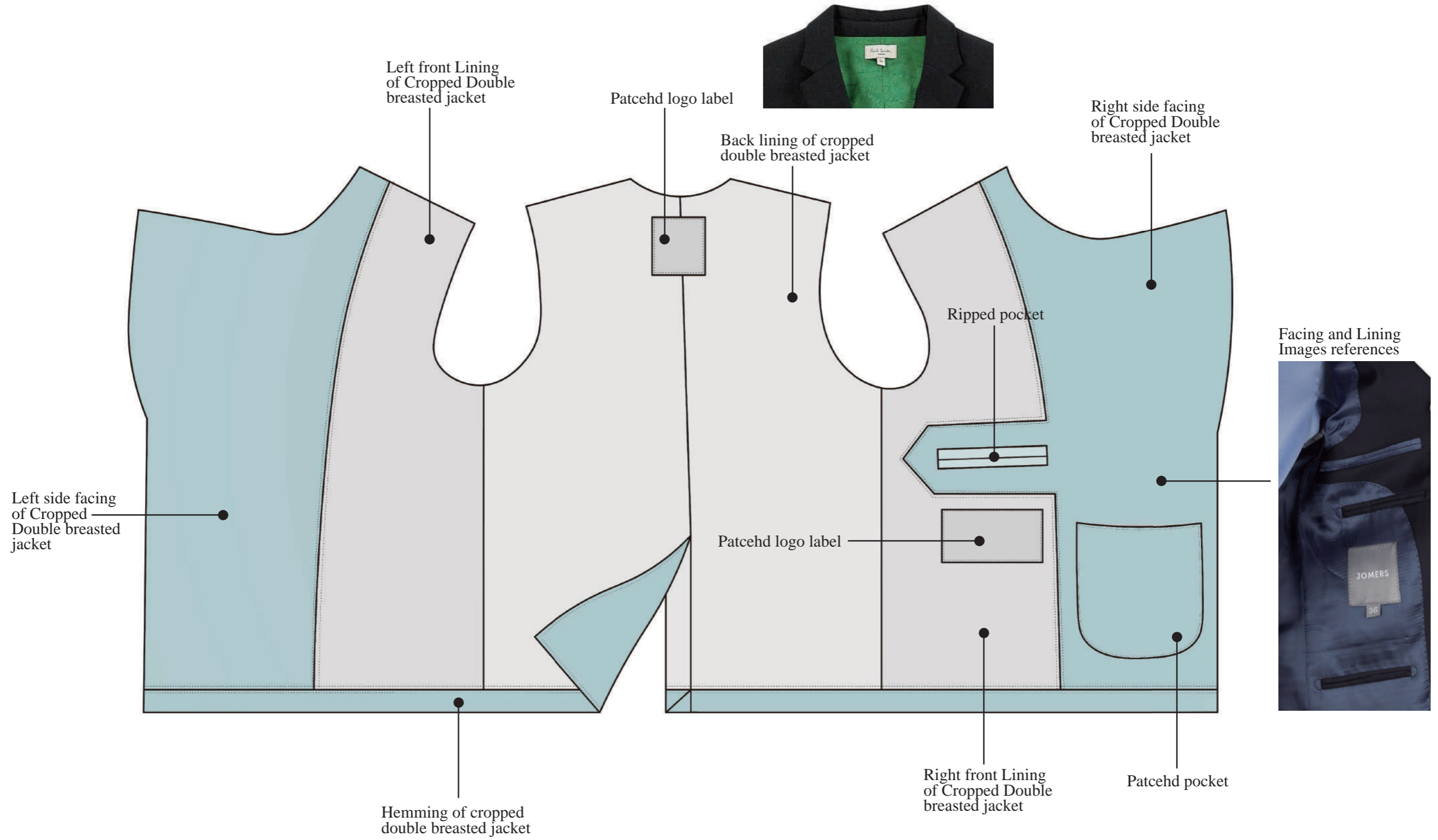
Modern hanbok coat lining image references





Trousers lining image references



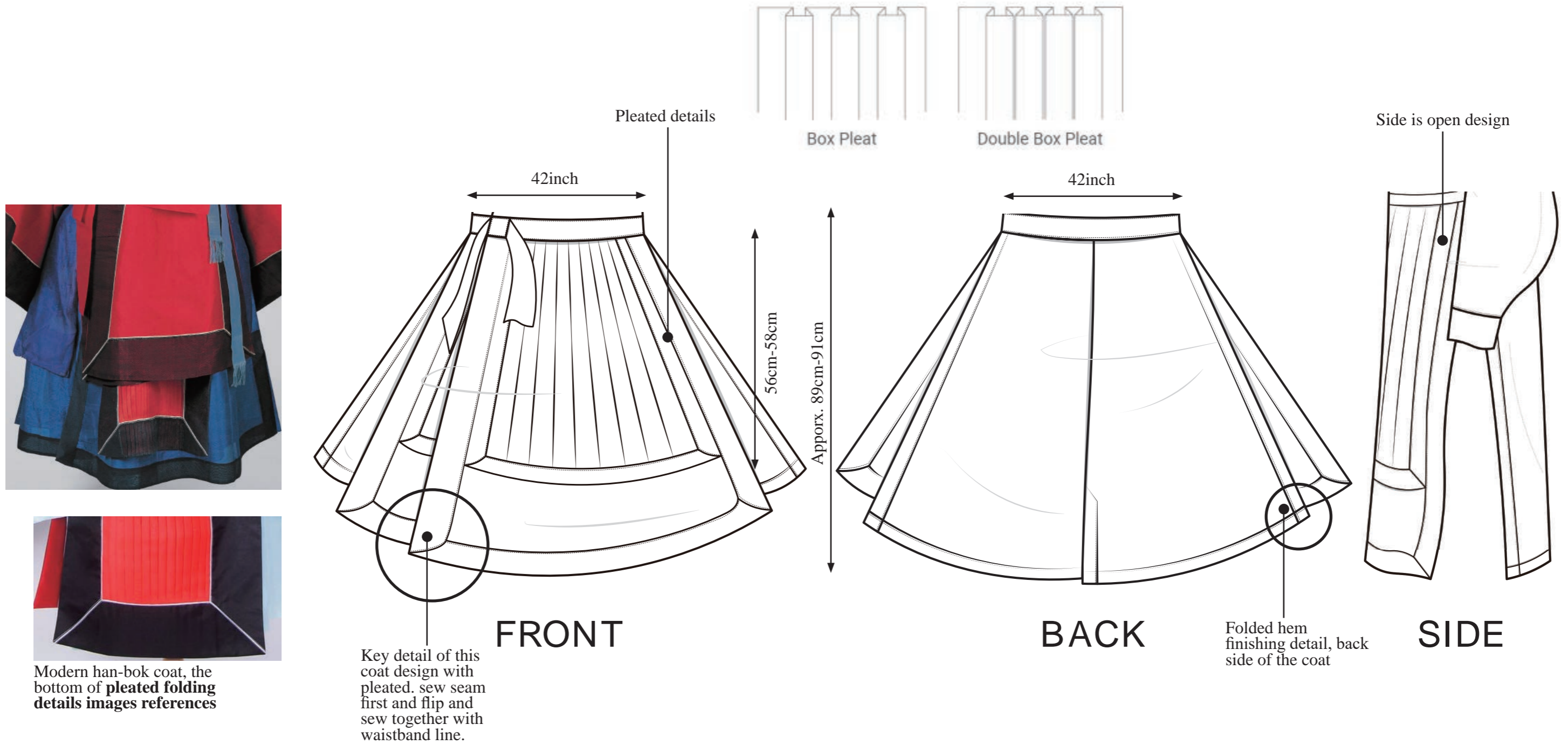


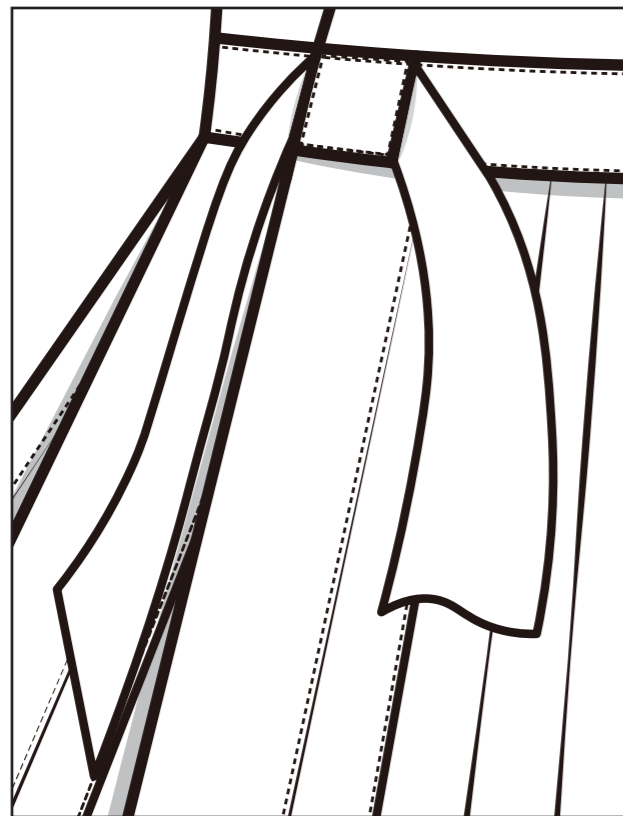


# DESIGN DETAILS

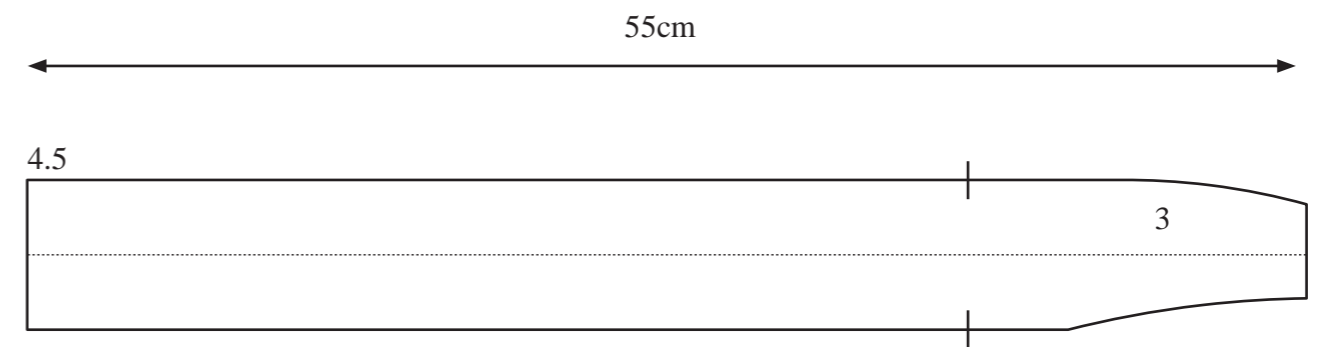
TECH PACK

KYLE DE CRWON 2021 S/S COLLECTION

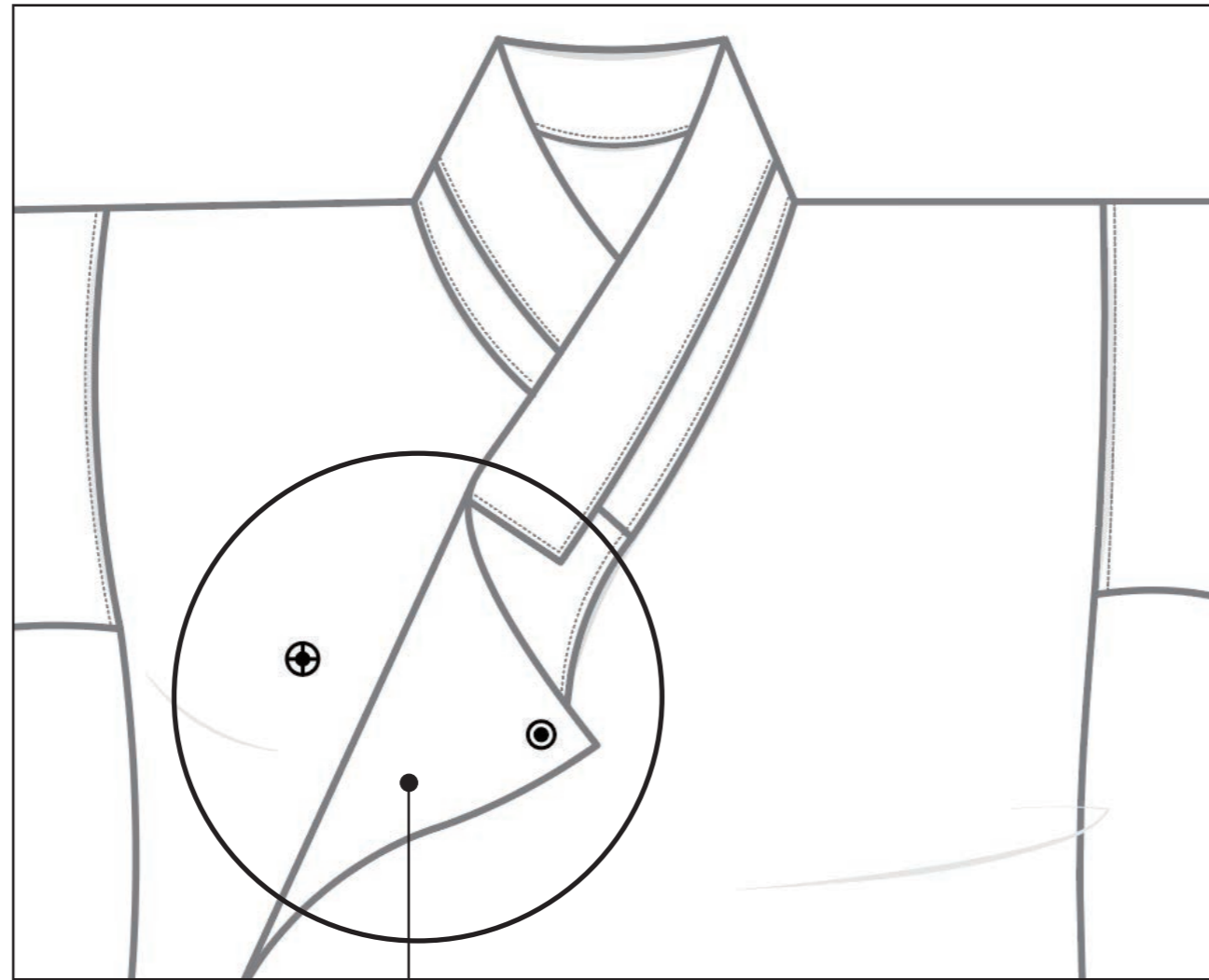




Modern han-bok coat,  
Ribbons details images  
references



**Ribbons details  
on waist band,  
overlapped design**

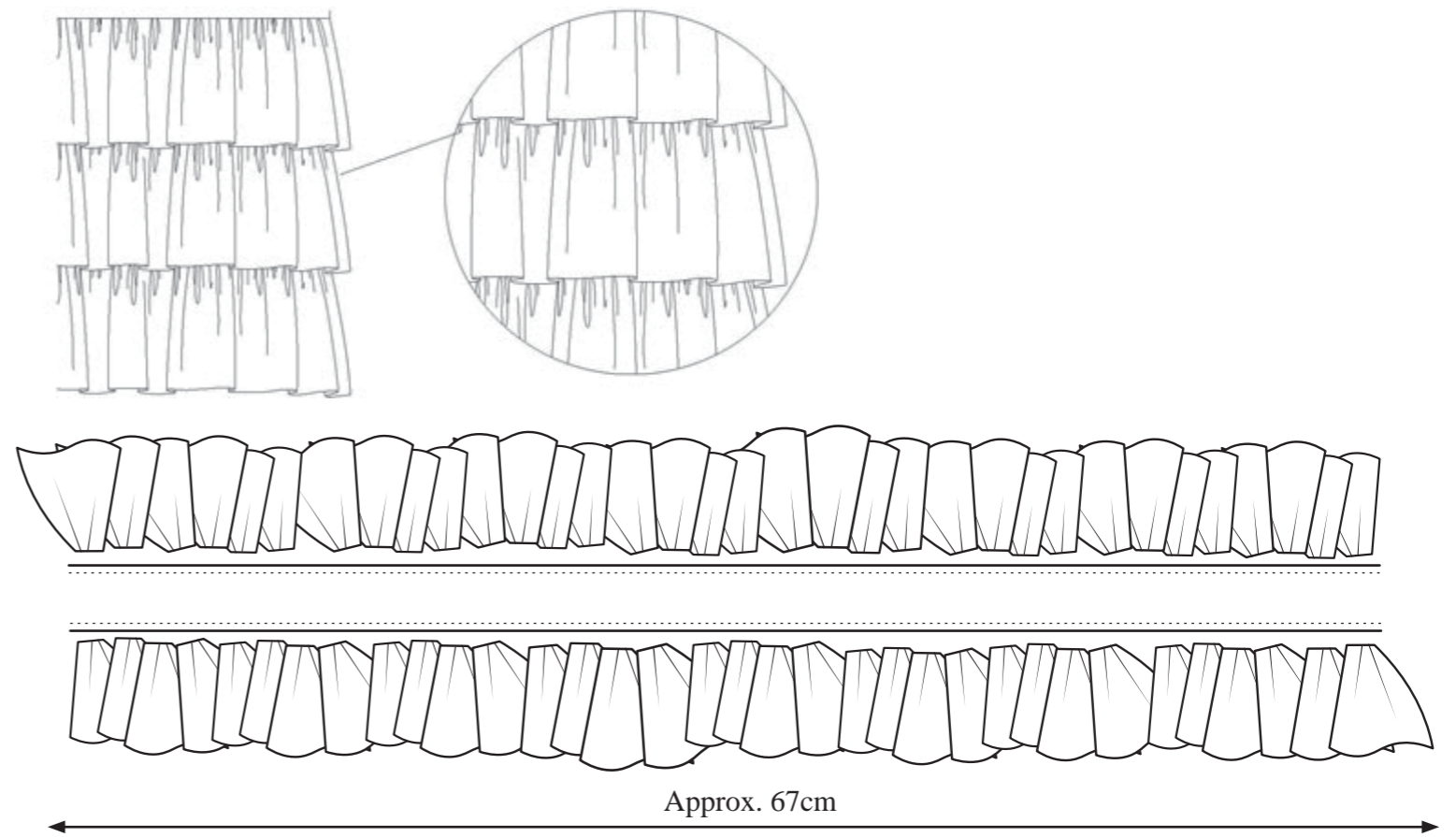
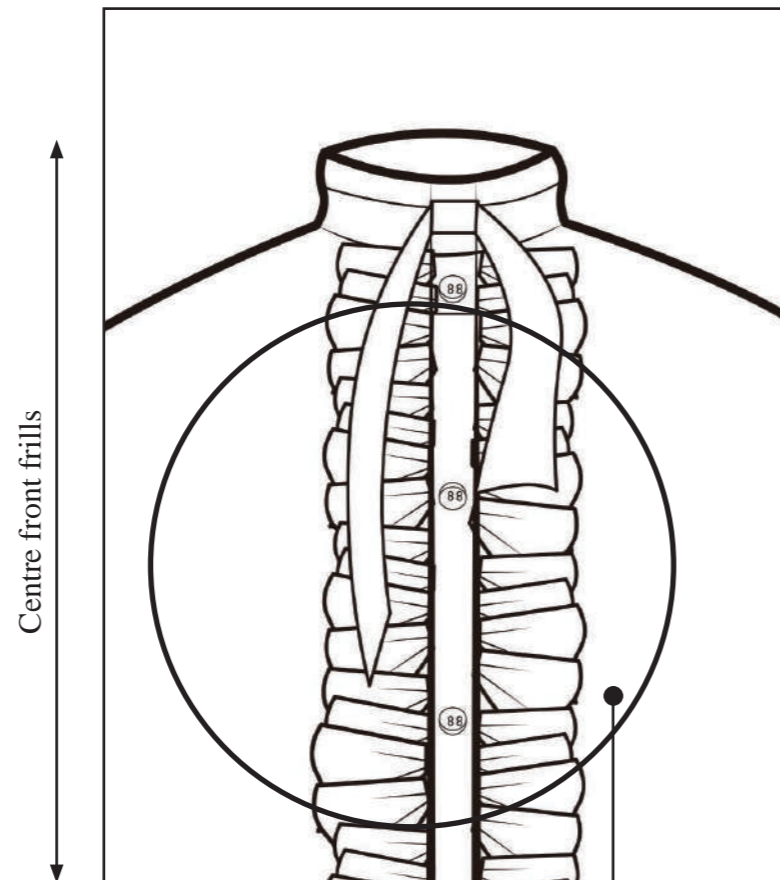


Overlapped design and snap buttons up details fixed coat



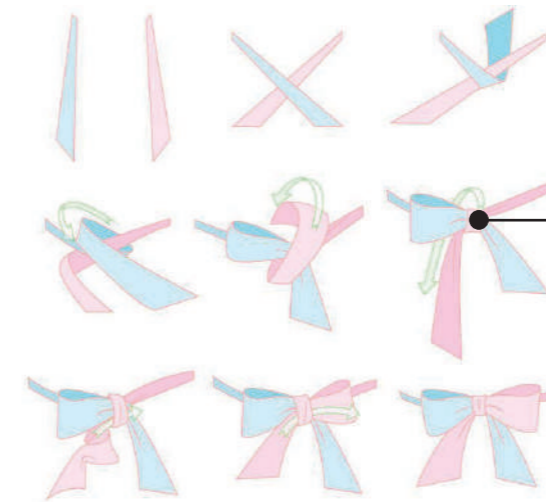
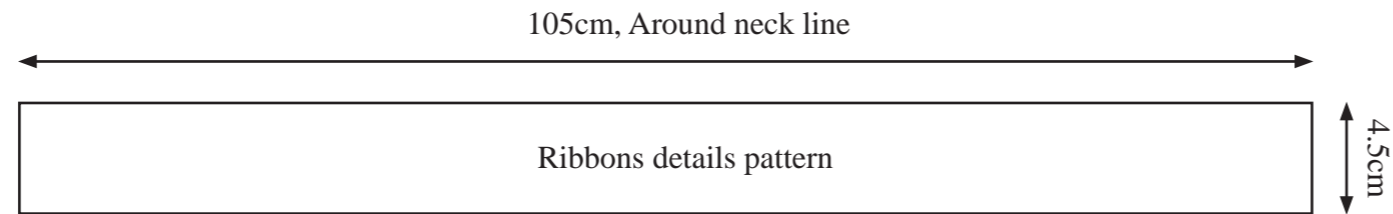
Snap buttons trims



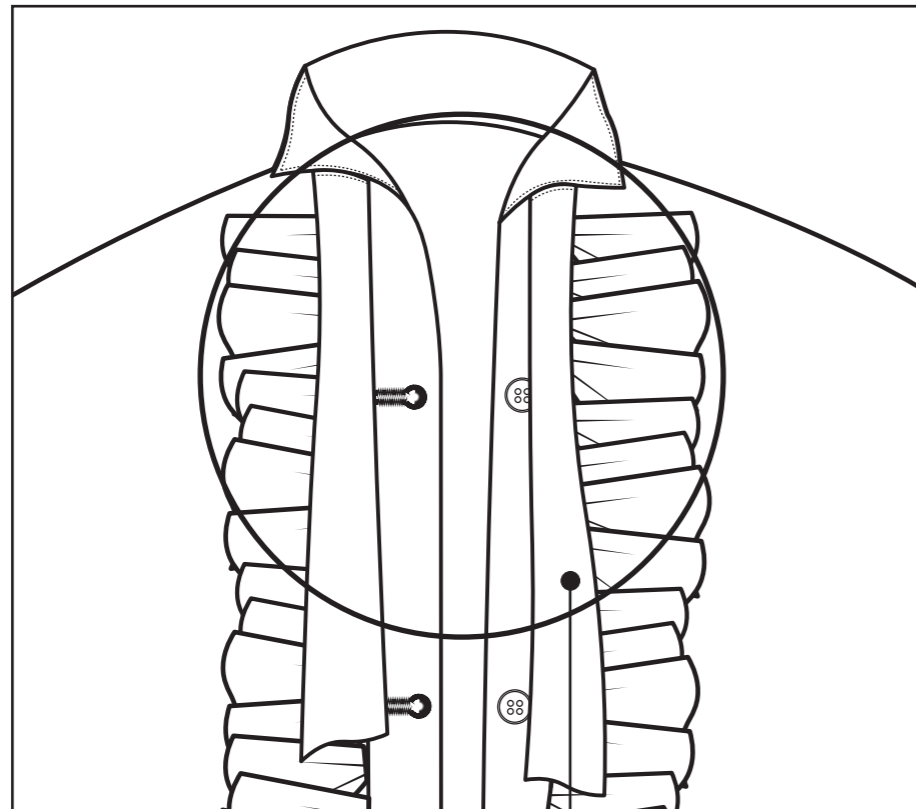


Frills details design

Frills details design on this frilled shirts centre front of this shirts



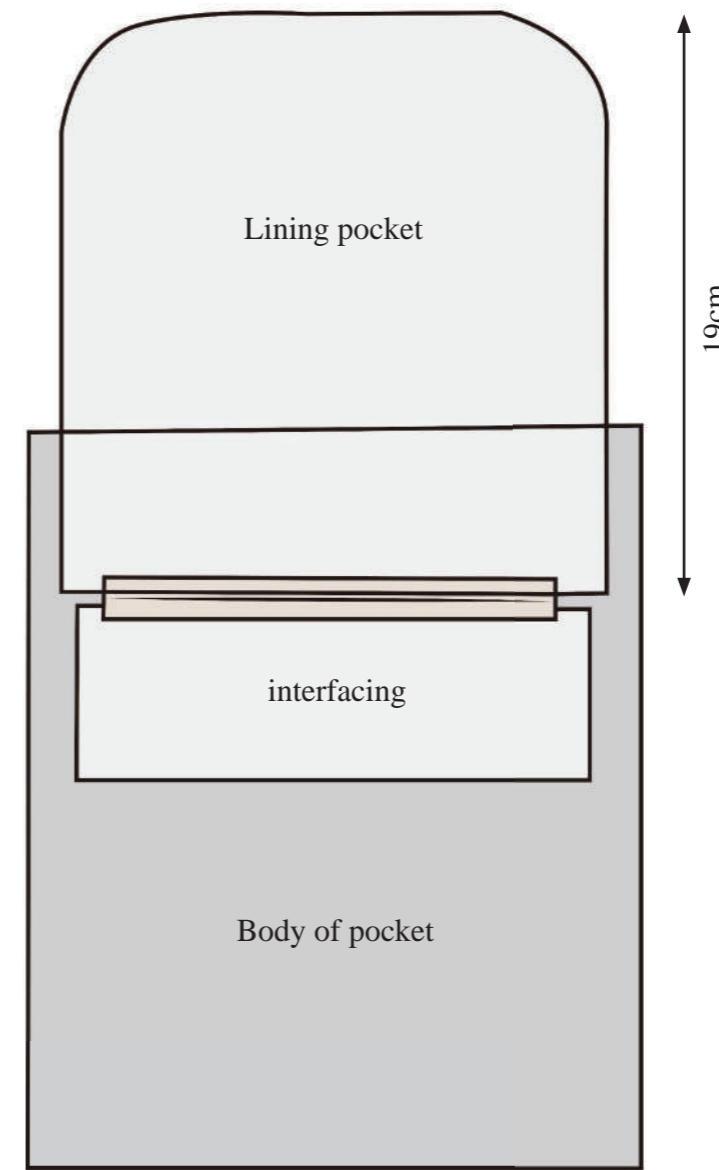
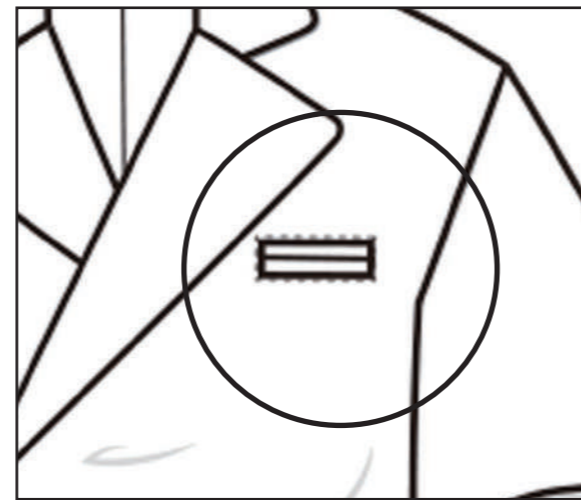
How to tie this shirts ribbons



Ribbons details on shirts neck line. It will be using top stitching method sew together with high neck line on shirts.



Walted rip pocket details  
on cropped double breasted  
short sleeves jacekt





# FINISHING

TECH PACK

KYLE DE CRWON 2021 S/S COLLECTION



Perfect binding between seam of facing and lining



Top stitching side of the binding high quality of finishing detail.

**Binding**

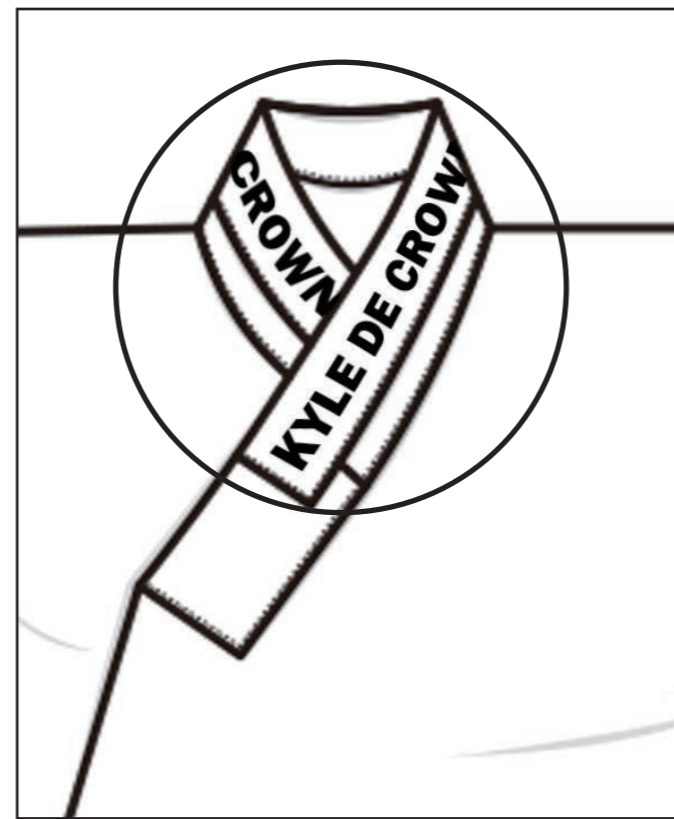
Finishing using binding technique whole seam around lining and facing



PLACEMENT PRINT  
APPLICATION

TECH PACK

KYLE DE CRWON 2021 S/S COLLECTION



Approx. 93cm

**KYLE DE CROWN**

**Name of Print:**

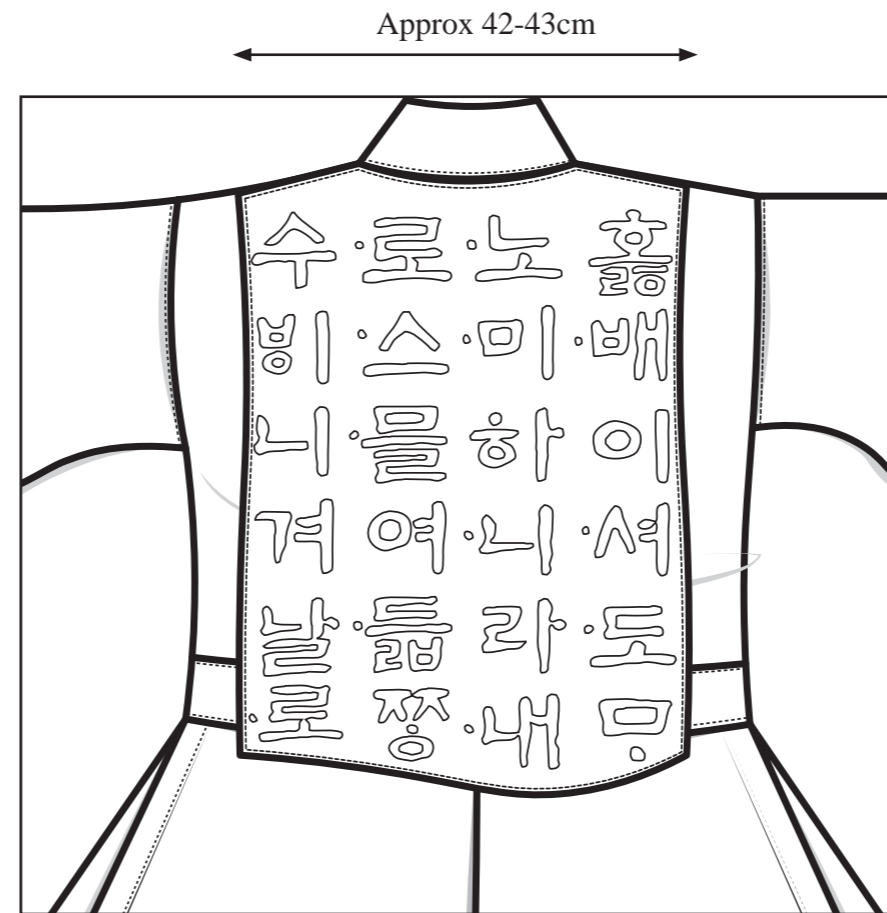
My brand name, kyle de crown

**Colours:**

Black lettering colour on pure white collar

**Technique and Position:**

**Printing.** This logo printing on the collar of the coat



**Name of Laser Cut:**

Old Korean Word Lettering

**Colours:**

**Laser cut** on Silver Filigree

Colours Fabric

Pantone 17-3911 TCX

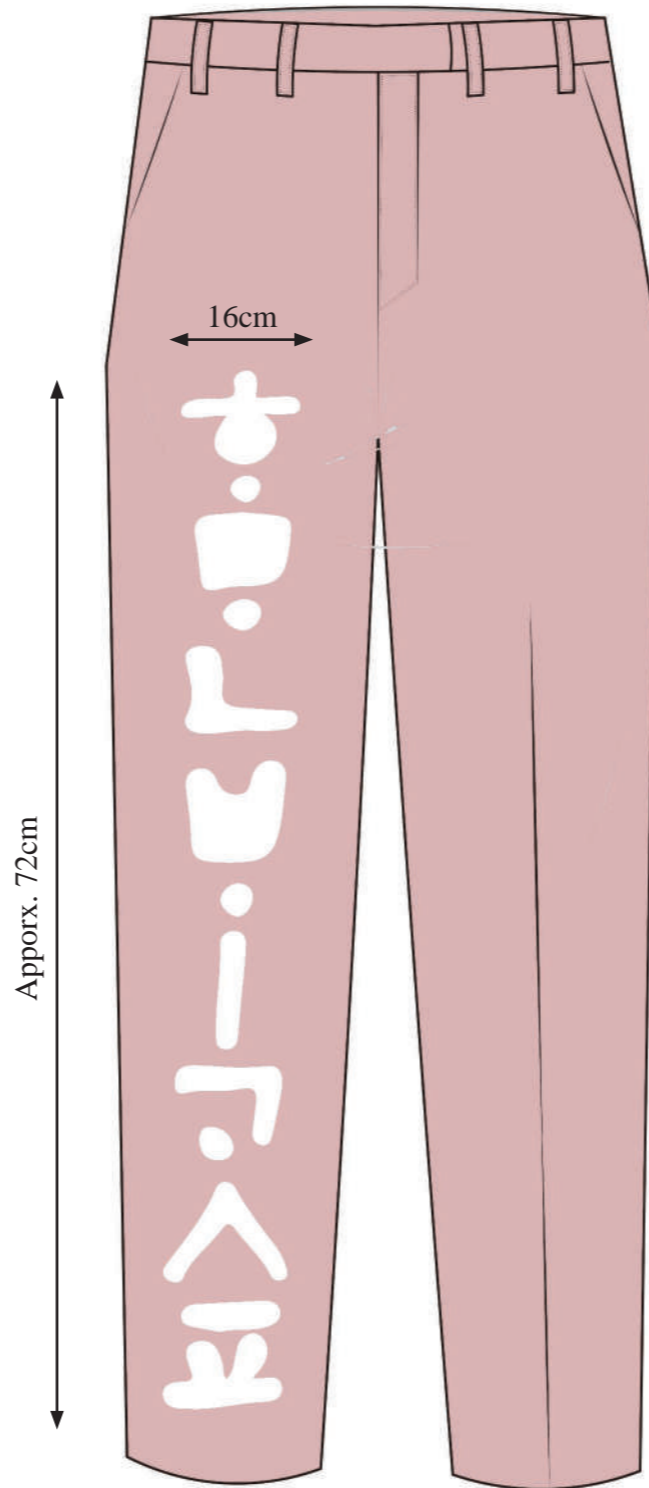
**Technique and Position:**

**Laser cutting technique** upper side of the back of the modern han-bok coat



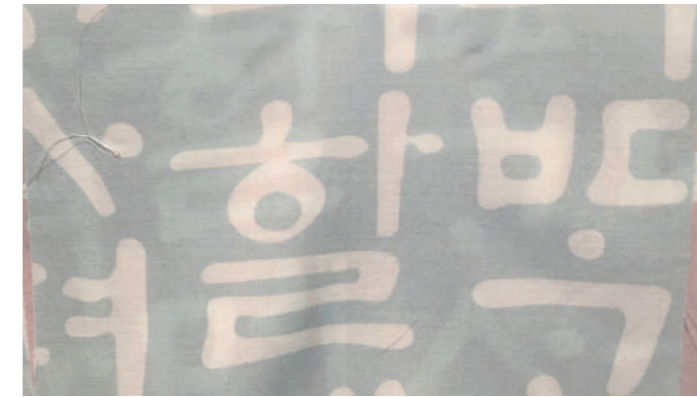
**Actual laser cutting sample**





Size of Print

**Name of Print:**  
Old Korean Word Lettering  
**Colours:**  
Pure White Colour  
**Technique and Position:**  
**Big Print Technique** on the  
middle of the trouser Right side



Actual print fabric sample



FIT

TECH PACK

KYLE DE CRWON 2021 S/S COLLECTION

