



LONDON TRANSPORT

Paul Smith
ポール・スミス

BLACK CAP



CITY OF LONDON



UNDERGROUND

RED BUS

RED BUS LONDON

London Transport

PUBLIC SUBWAY

UNDERGROUND

PUBLIC SUBWAY

Own analytical drawing
LONDON TRANSPORT

Grand city of London and famous London's transport that I saw when I first came in United Kingdom. London's representative public transport, my first memory in England, is the starting point and due to current situation number of london people to ride cycle to go work as becoming popular.

CYCLING

CONCEPT

Paul Smith
 ポール・スミス

FORMAL CYCLING

I researched about the London tweed run while investigating past british cycle, I was interested in the British people riding bicycles as wear tweed and herringbone suits and coat. Also, I drew inspiration for classic silhouettes and fabrics from British legend cyclist Tom Simpson.



TWEED RUN



BRITISH CLASSIC CYCLING

TOM SIMPSON



BRITISH HERRINGBONE FABRIC



CONCEPT

Paul Smith
ポール・スミス

OUTDOOR



WINTER CYCLING

FUNTIONALITY



SPORTS CYCLING

Past sports cycling and cyclists gave me inspiration such as activities, outdoor silhouettes, waterproof, and sports lycra fabric. In order to cycle in harsh weather, rainy and snowy winter, I investigated Silhouette of clothes and detailing such as pocket with excellent thermal warmth and functionality.

WATERPROOF

CONCEPT

Paul Smith
ポール・スミス



BIG BEN

LONDON EYE

ACTUAL FABRIC

PRINTING ON FABRIC

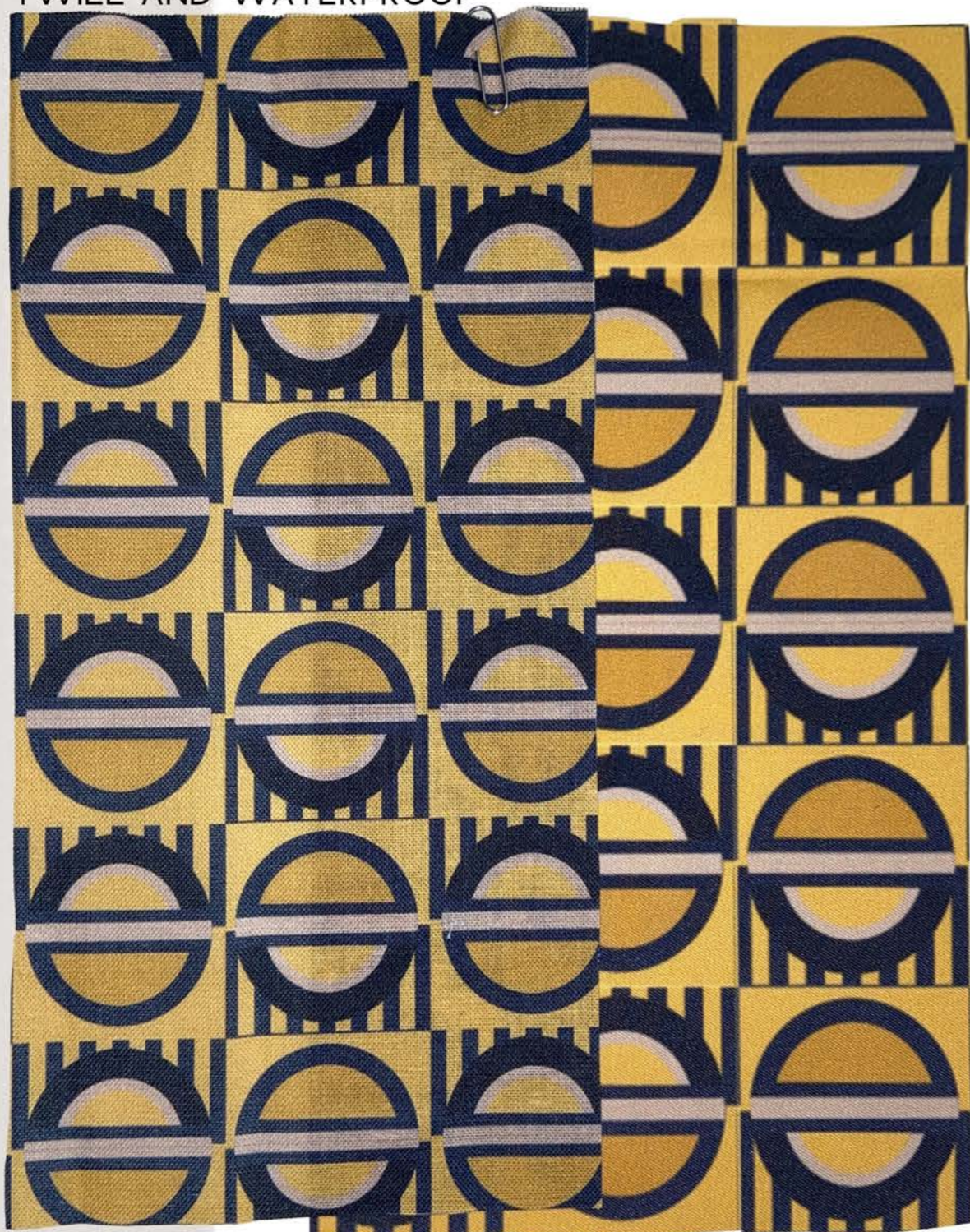


CYCLING IN LONDON OWN PRINTING DESIGN

COLOUR PALETTE

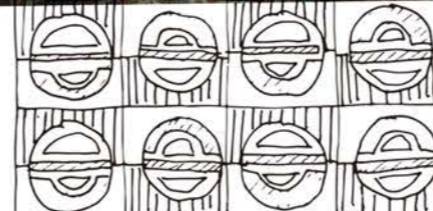
I developed this colours, inspired by London I felt when I first arrived in London. Big Ben, London Eye, and bikers in the London landscape i saw from Primrose Hill was beautiful. Therefore, I developed the memory of that time into printing design. Also think about japanese guys skin tone for market on sketchbook.

TWILL AND WATERPROOF

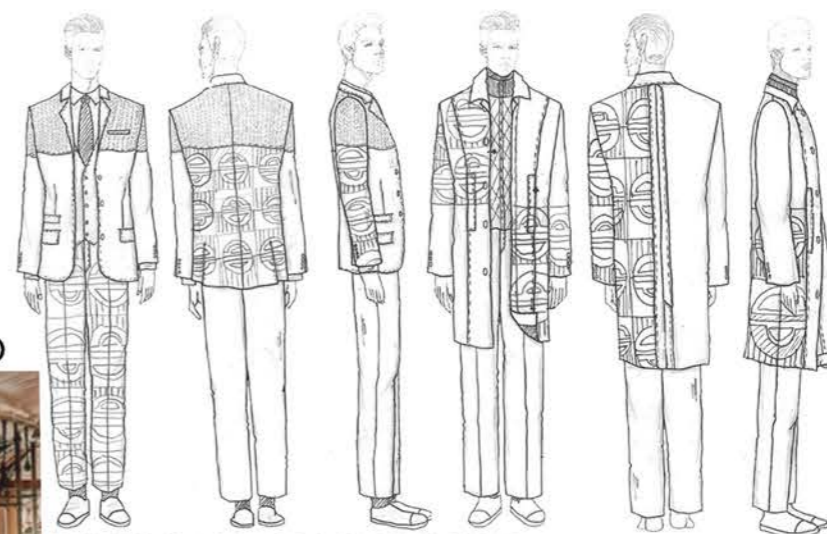


ACTUAL PRINTING SAMPLE

UNDERGROUND LOGO



INITIAL SKETCH



POSITION OF PRINTING



INTERIOR OF UNDERGROUND
PRINTING DEVELOP

This quirky print was inspired by the London Underground logo, Big Ben's details and underground interiors. The print that reinterprets the atmosphere of England and London cleverly and the classic silhouette are in perfect harmony.

PRINTING

Paul Smith
ポール・スミス

WATERPROOF AND LYCRA



POSITION OF PRINTING

TOM SIMPSON'S LOGO



INITIAL SKETCH



INTERIOR OF UNDERGROUND
PRINTING DEVELOP

This lozenge's creative and sporty printing was inspired by Tom Simpson's signature patterns and underground interiors, which I re-created. This sporty print harmonizes with my collection.



ACTUAL PRINTING SAMPLE

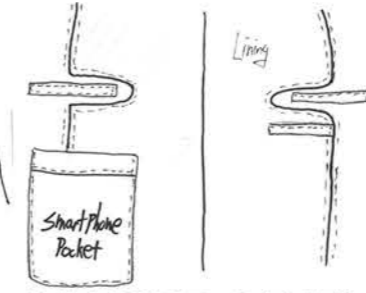
SAMPLE POCKET



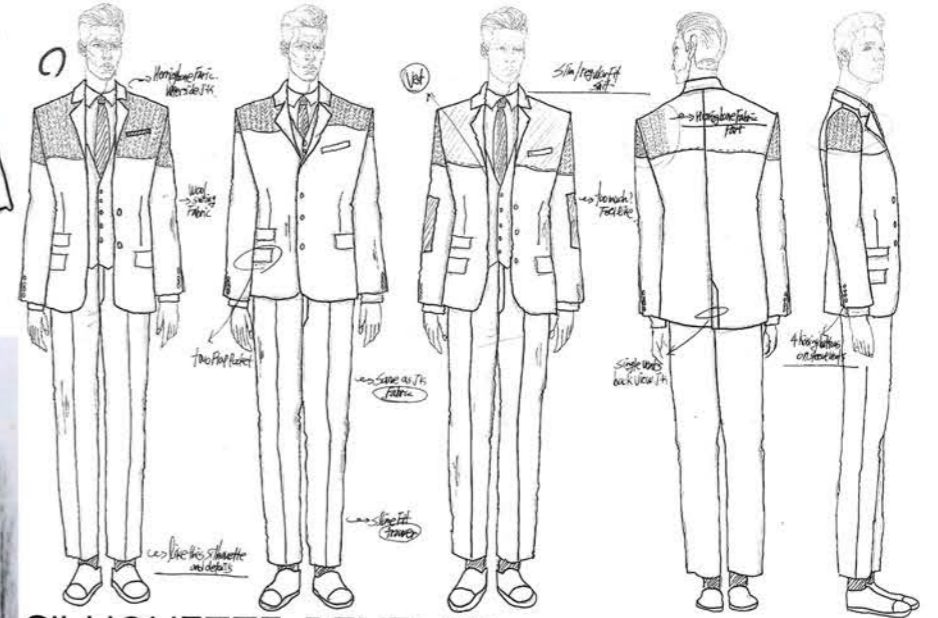
INITIAL DRAWING

COLOUR WITH PRINTING OUTFIT1 DEVELOPMENT

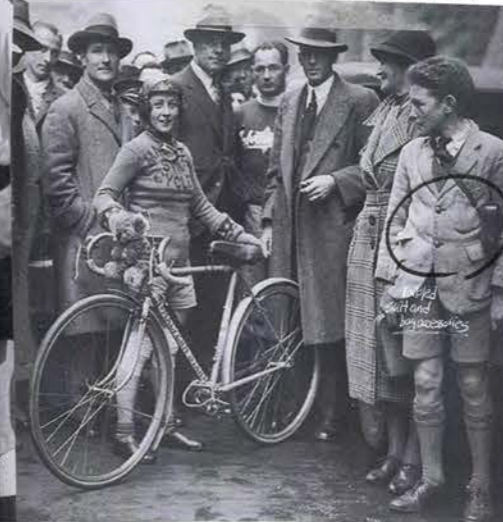
The first outfit was inspired by the appearance of British people riding bicycles wear classic suits in the past. I designed a double flap pocket detail and a slim fit suit silhouette, and I also thought about interior design and lining pockets to store transport cards. Traditional British tweed herringbone fabric inspired by Tom Simpson.



INTERIOR DEVELOP



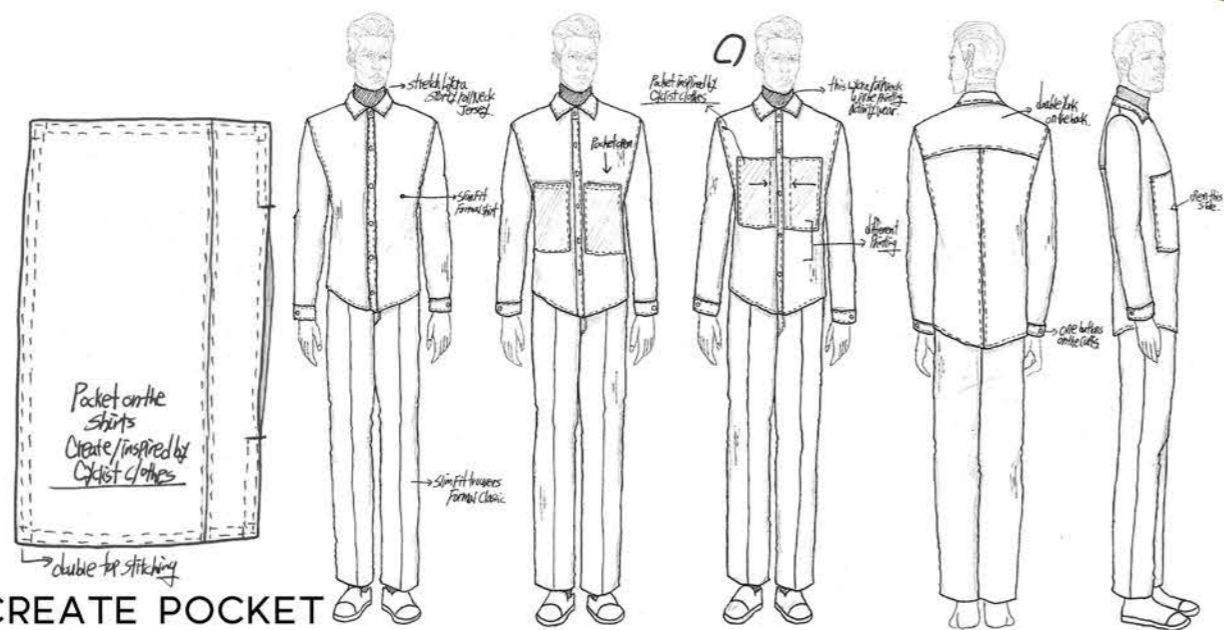
SILHOUETTE DEVELOP



CLASSIC TAILORED JACEKT

DESIGN DEVELOP

Paul Smith
ポール・スミス

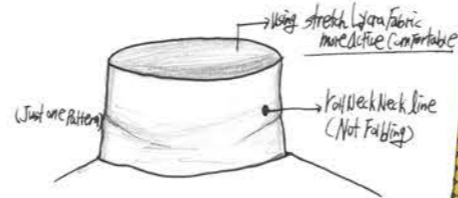


CREATE POCKET



COTTON TWILL

ROLL NECK JERSEY LYCRA



POSITION OF PRINTING AND COLOUR

INITIAL SKETCH

SHIRTS AND JERSEY DEVELOPMENT

Design development for the shirt and jersey worn under the jacket. Inspired by the appearance of cyclists in the past, I designed a slim fit shirt. In addition, a new pocket design was created. Sporty pockets are added to the formal shirt fit. The fabric is a choice of classic cotton twill and sporty stretch lycra fabric.

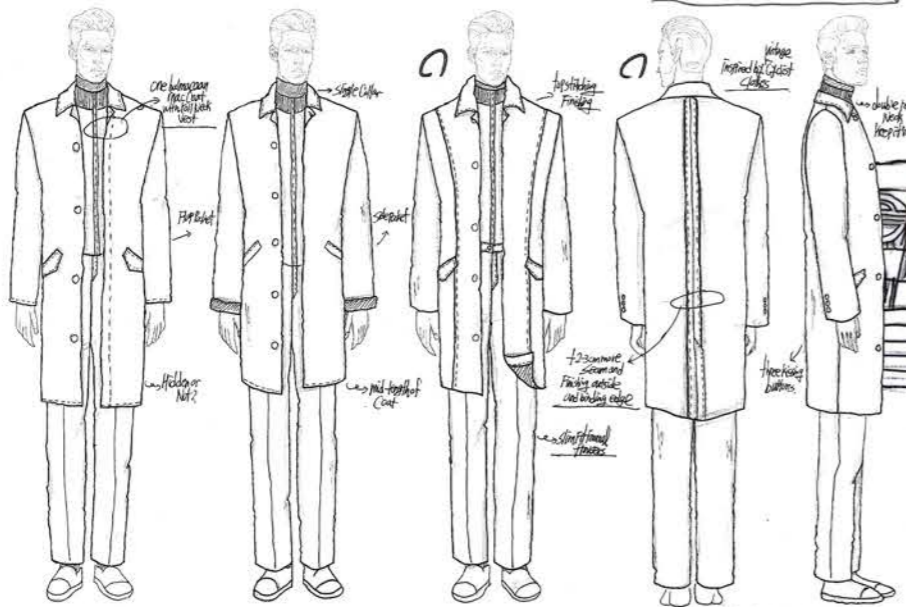
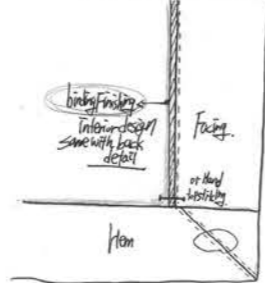


DESIGN DEVELOP

Paul Smith

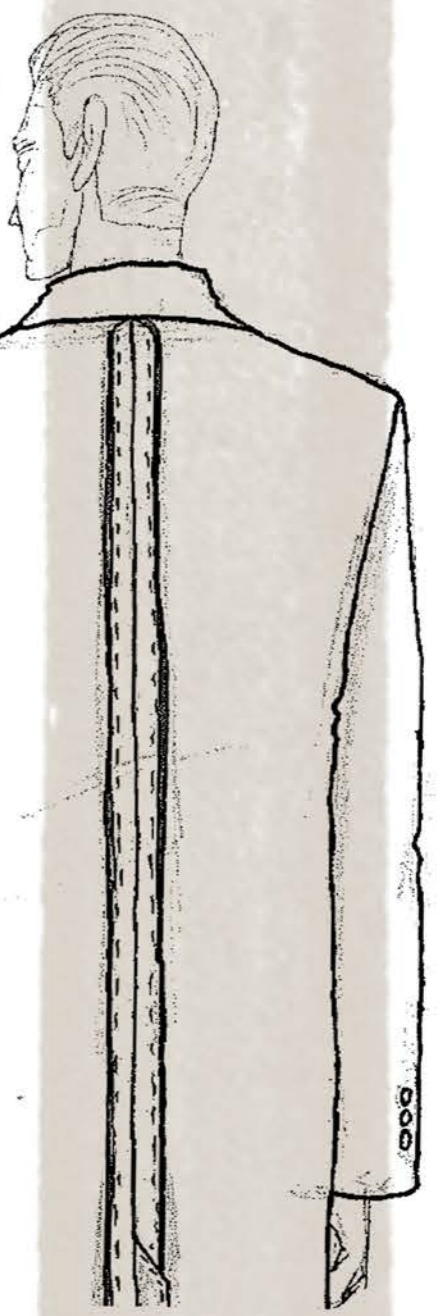
ポール・スミス

FINISHING



SILHOUETTE

SAMPLE BINDING



BINDING INTERIOR DESIGN

COMBINATION CLASSIC, SPORTY
OUTFIT 4 DEVELOPMENT

The fourth outfit was inspired by sports cyclists and printed binding details on the back patterned out seam of balmacan coat. Sporty detail was added to the classic mac coat to create a innovative and quirky design outfit. In addition, by developing design for binding and finishing in interior design, it is suitable for the market level of perfect finishing.

DESIGN DEVELOP

Paul Smith
ポール・スミス

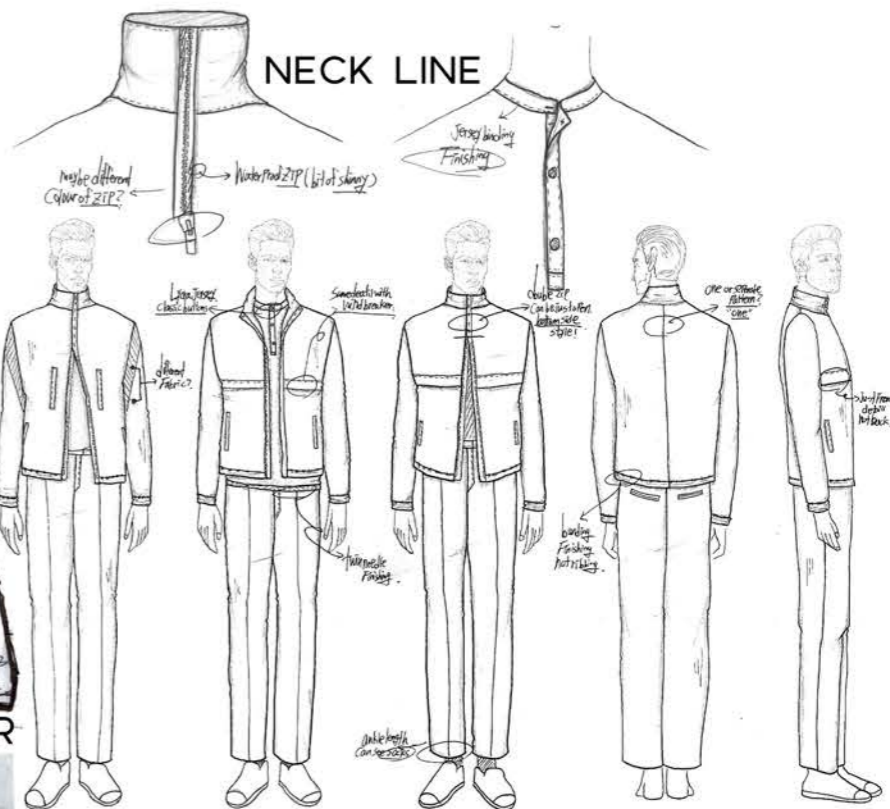


SAMPLE SIDE POCKET



COLLAGE WITH ANALYTICAL
OUTFITS DEVELOPMENT

This lightweight waterproof jacket was designed inspired by the clothes cyclists wore in harsh seasons. In addition, I created a jacket design with basic but elaborate details through a collage of stand work and analytic drawings. interior design for functional clothing was developed, and a trendy jacket was designed by adding quirky printing. jersey is inspired by vintage cycle wear and created as a button tee shirt.



SLIM FIT WATERPROOF JACKET



INTERIOR



CYCLIST SILHOUETTE

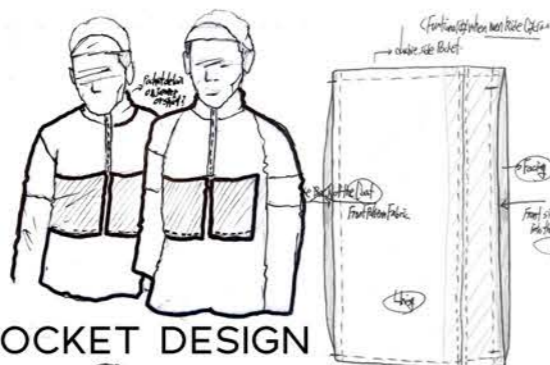


GOERTEX

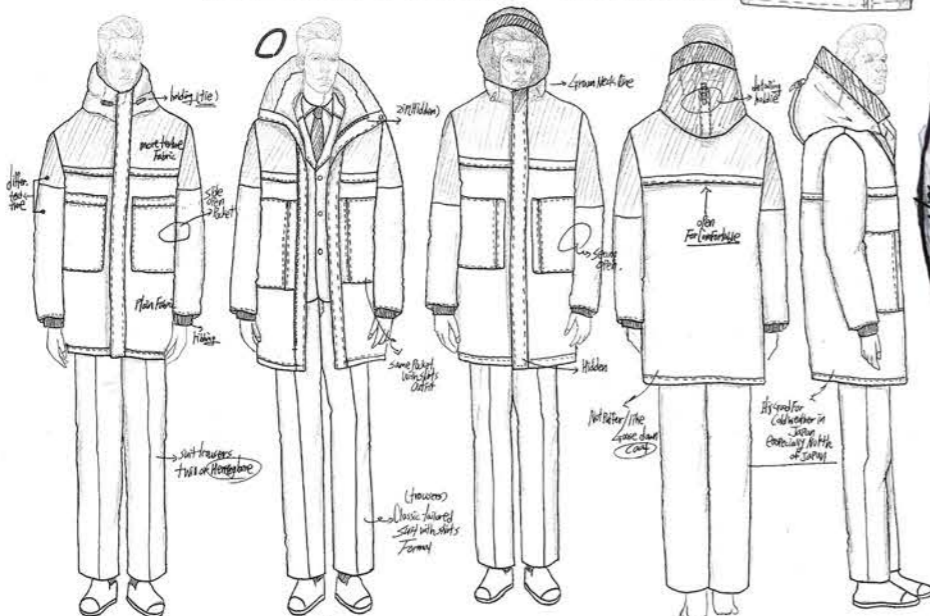
DESIGN DEVELOP

Paul Smith
ポール・スミス

CREATE POCKET DESIGN



CREATE OWN POCKET



INTERIOR DESIGN



DOWN COAT WITH SUIT
OUTFIT6 DEVELOPMENT

This down coat design was inspired by the figure of winter cyclists. Moreover, I created a new pocket design inspired by them. It also has developed a waterproof and functional interior design. And matched with the whole printing suit setup to create a gorgeous yet classic design. Create a luxurious and functional down coat using cotton nylon waterproof fabric.

LINING AND DETAIL



CYCLIST DOUBLE POCKET

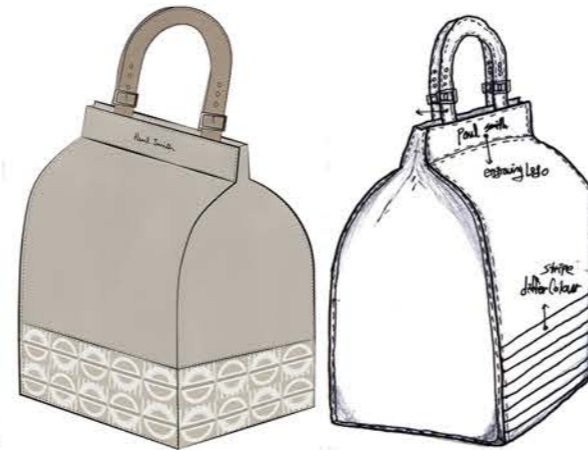


DESIGN DEVELOP

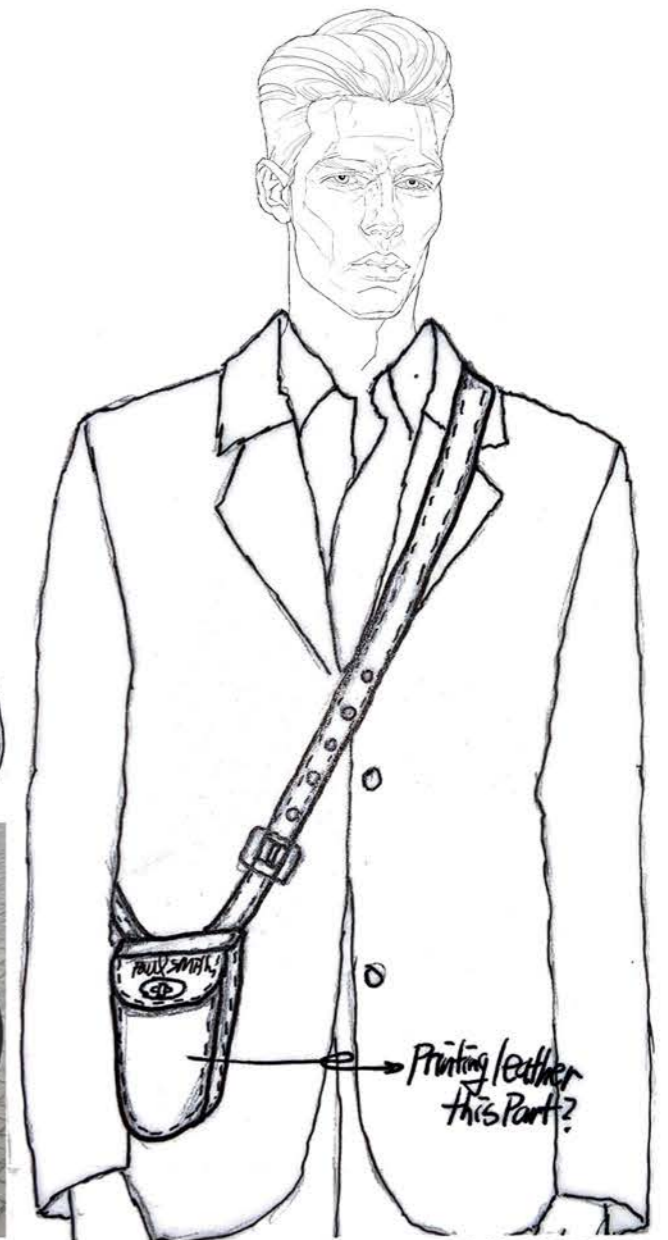
Paul Smith
ポール・スミス



PRINTING ON LEATHER



BOSTON BAG

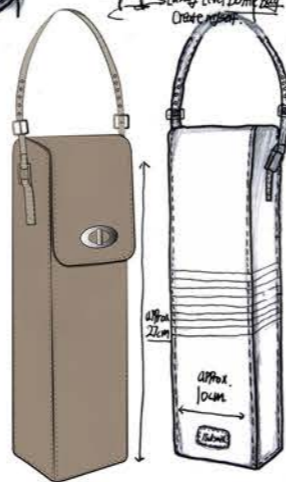


MINI BAG

CYCLING CAP



BOTTLE BAG



ACCESSORY DEVELOP

I created some interesting accessory designs for this Paul Smith London Transportation Collection. Inspired by the saddles and bags of transport bicycles from the British past World War II, I designed trendy mini bags and boston bags. In addition, I created a luxury bottle bag in vegan leather that suitable for Paul Smith market level, additionally designed cycling cap inspired by a cyclist cap.

CHANGE THE SIZE SLIM FIT



PERFECT FIT AND FINISHING

PRINTING SHIRTS 3D DEVELOP

I additionally made a whole printed slim fit shirt and cap for Outfit 2 at home. Due to the current lockdown situation, I am working at home and 3d work for my portfolio. I also started this work to learn how to do a whole print. I practiced make shirts and developed perfect finish for the collar, cuffs and back details of shirts. I measured of actual pattern and transferred to an illustrator, digitized the pattern to fit the actual size, and then placed my printing. good experience.

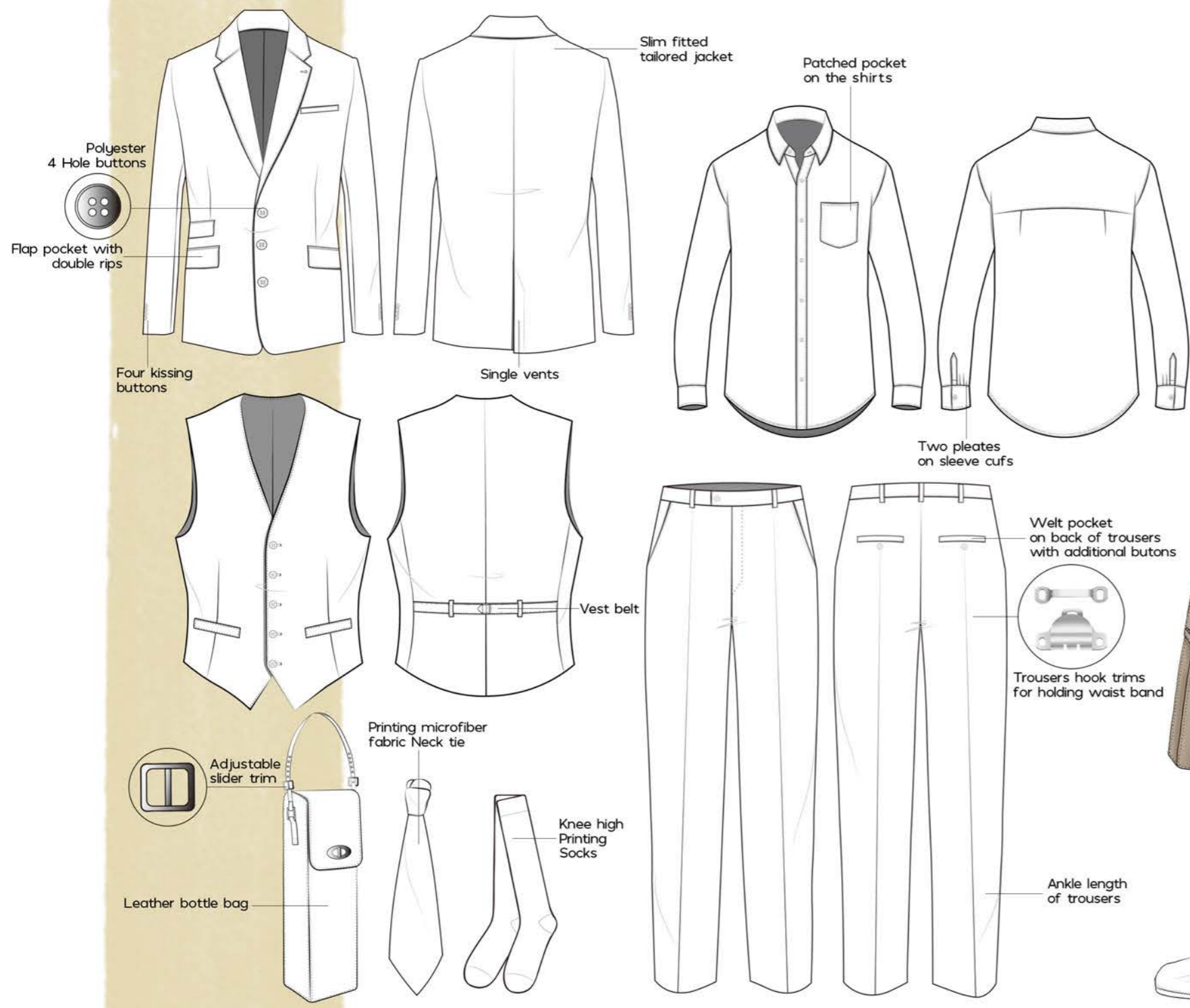
LAY PLAN, PRACTICE WHOLE PRINT



WORK FROM HOME



COLLAR AND BACK PLEATS



FABRIC
 Navy Tweed Herringbone Fabric for Tailored Suit Set-up. Yellow Poly Twill Fabric for Shirts. Printing Cotton Blend Fabric for Printing Neck Tie. Printing Nylon Fabric for Socks. Baige Vegan Leather for Bottle Bag.



OUTFIT1 FORMAL NAVY SUIT SET UP WITH YELLOW SHIRTS MATCHED WITH POINT QUIRKY PRINTING NECK TIE AND SOCKS AS STYLING WITH CREATE OWN BOTTLE BAG.

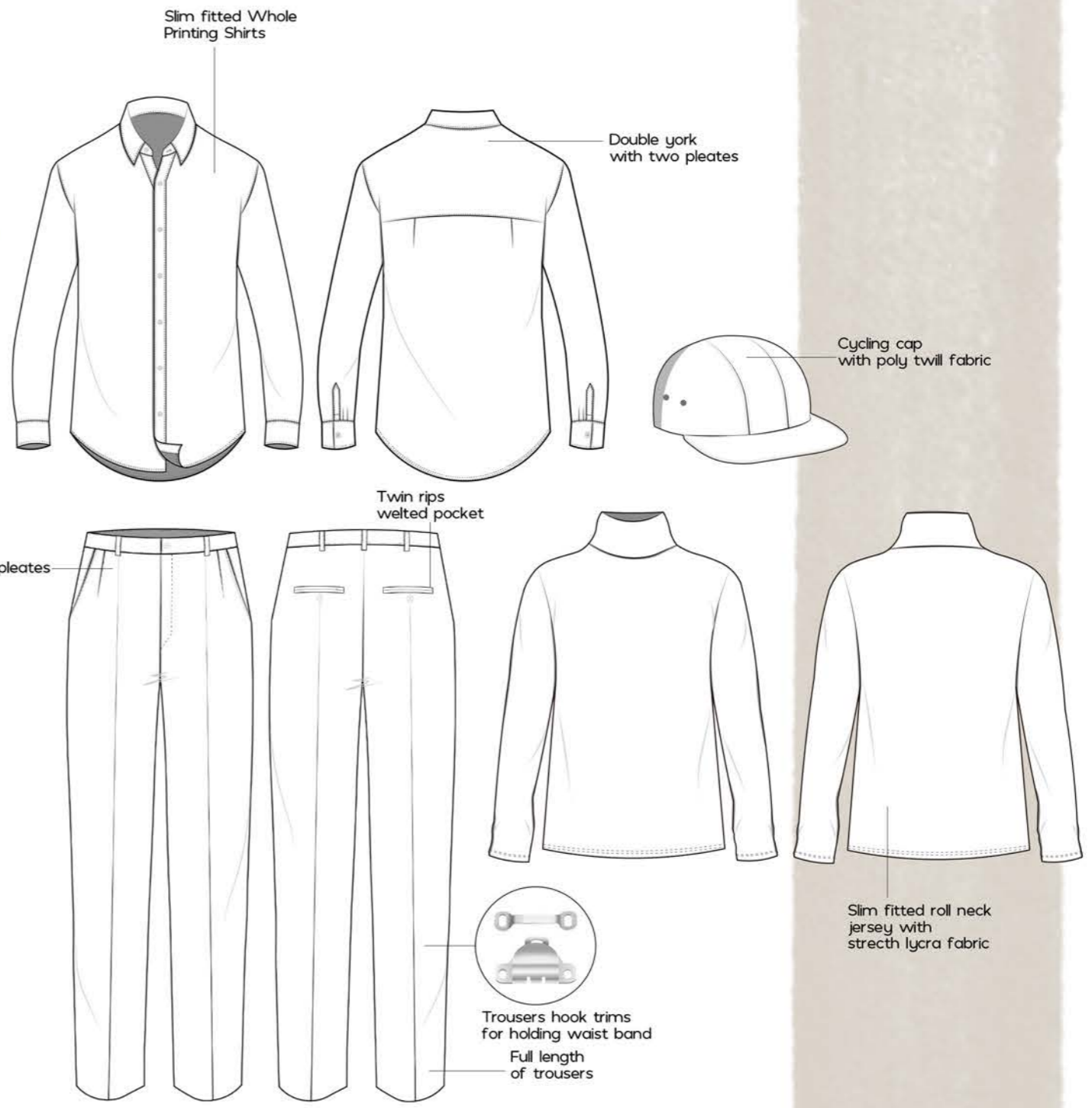
OUTFIT 1 BREAKDOWN

Paul Smith
 ポール・スミス

FABRIC
 Printing Cotton Poplin Fabric for Shirts. Printing Stretch Lycra Fabric for Roll-neck Jersey. Wool Blend Twill Fabric for Trousers. Printing Poly Twill for Cycling Cap.

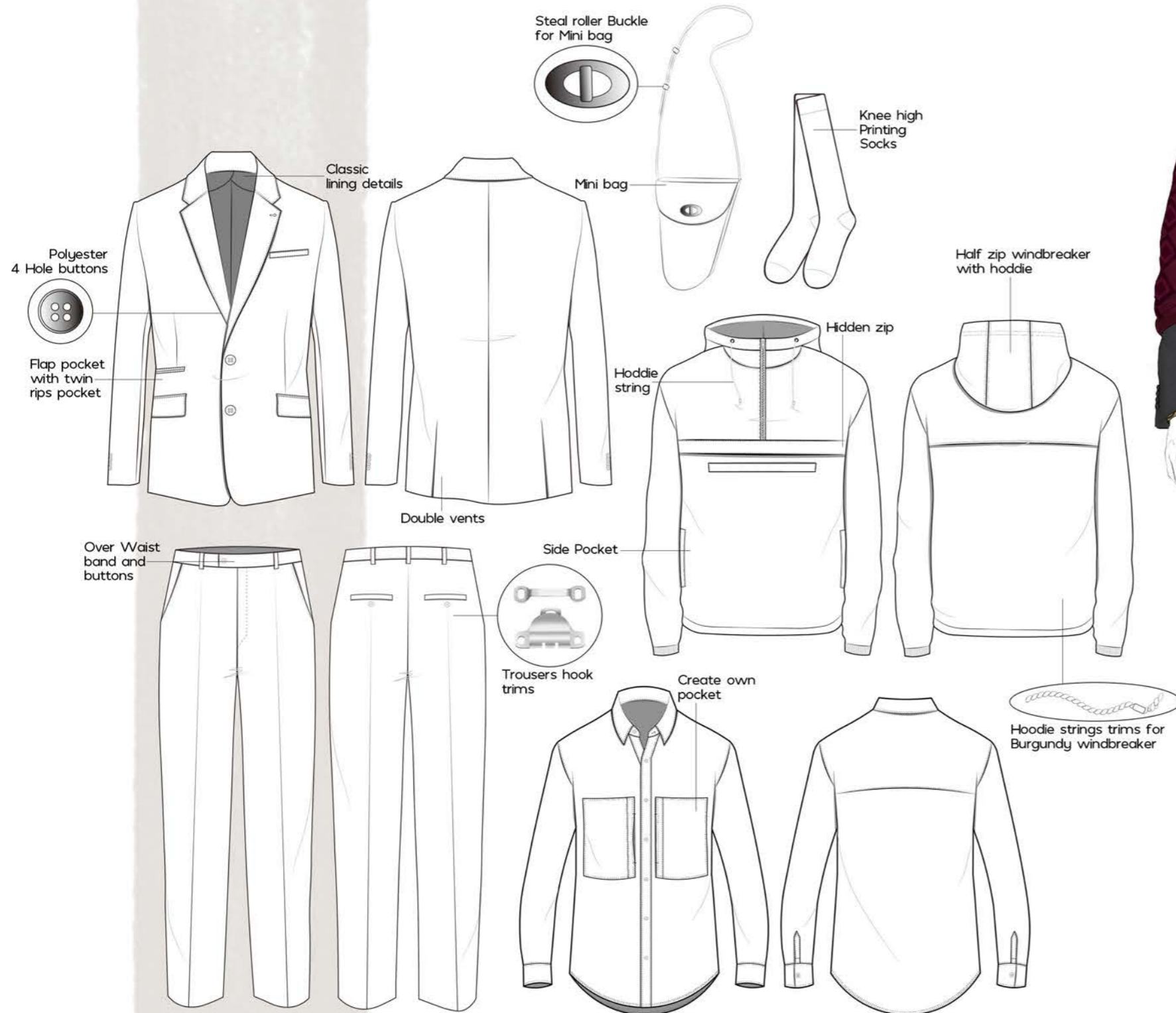


OUTFIT 2 WHOLE PRINTING SLIM FIT SHIRTS WITH WOOL TWILL TROUSERS AND PRINTING LYCRA JERSEY AND CAP.



OUTFIT 2 BREAKDOWN

Paul Smith
 ポール・スミス



FABRIC
 Printing Burgundy light weight Water-proof Fabric for Half-zip Windbreaker.
 Charcole Tweed Herringbone Fabric for Suit. Stretch Poplin for Shirts. Printing Vegan Leather for Mini bag.



SPORTY

OUTFIT3 SPORTY HALF ZIP WINDBREAKER MATCH WITH CLASSIC SUIT SET UP STYLING WITH PRINTING SHIRTS AND SOCKS AND TRENDY MINI BAG.

FABRIC
 Navy Blue Tweed Herringbone
 Fabric for Balmacaan Coat with
 Waterproof Binding fabric for
 Back Details. Stretch Lycra Print-
 ing Fabric for Jersey. Wool Blend
 Twill Fabric for Trousers.

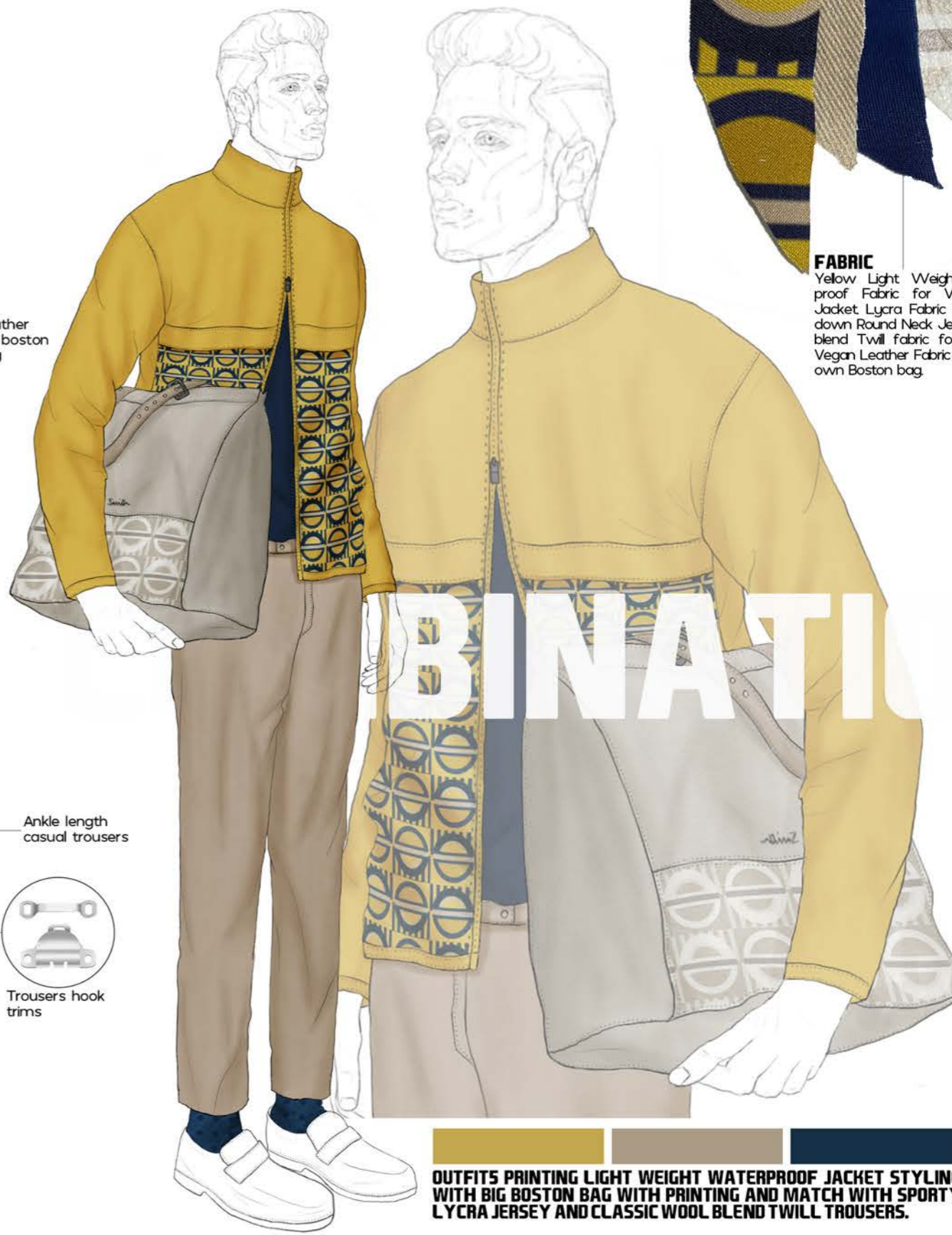
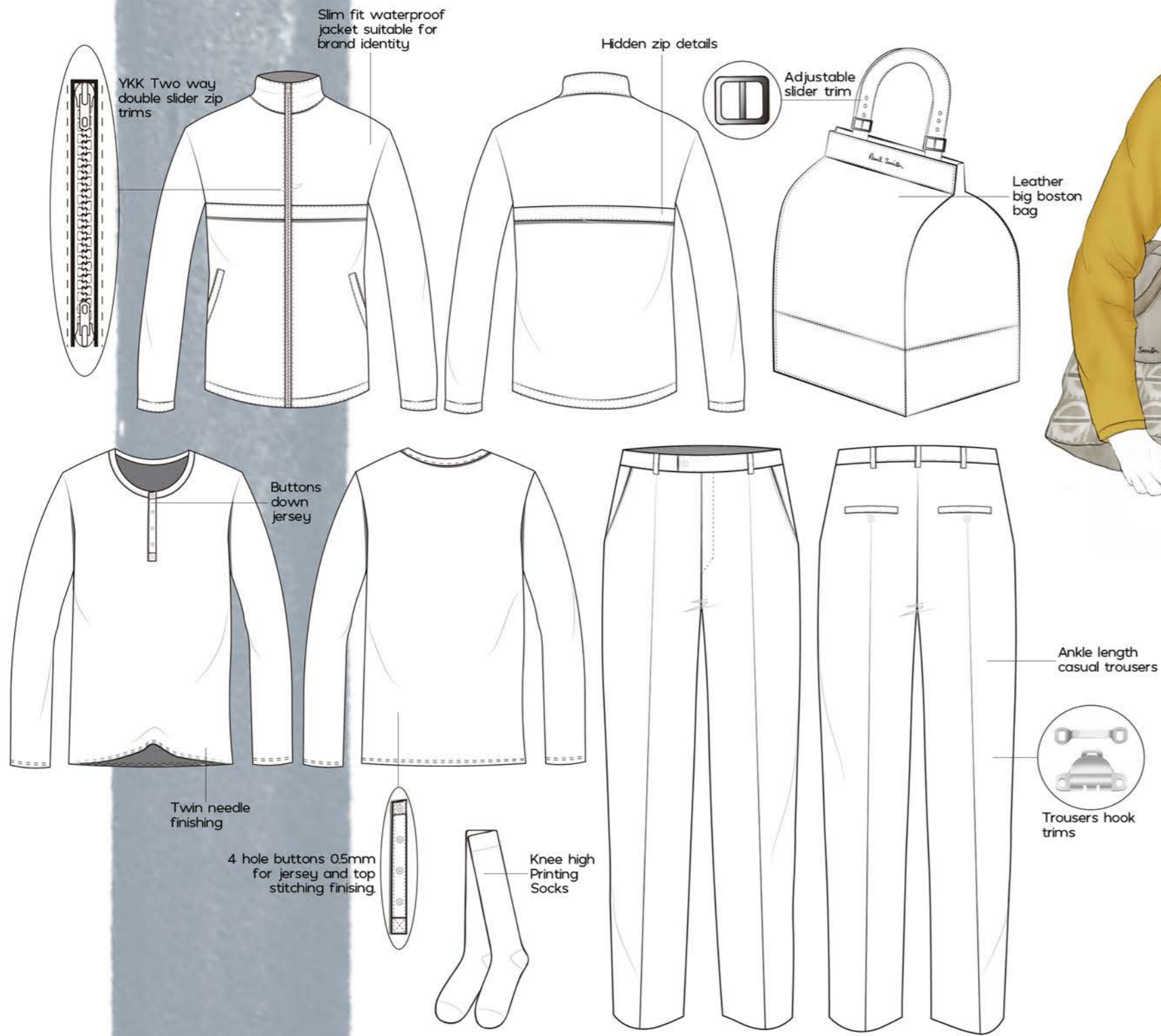
CYCLING

**OUTFIT 4 MID LENGTH OF BALMACAAN MAC COAT WITH
 HERRINGBONE FABRIC AND PRINTING BINDING DETAIL ON
 BACK STYLING WITH SPORTY CAP AND TWILL TROUSERS.**



OUTFIT 4 BREAKDOWN

Paul Smith
 ポール・スミス



FABRIC
 Yellow Light Weight Water-proof Fabric for Waterproof Jacket. Lycra Fabric for Button down Round Neck Jersey. Wool blend Twill Fabric for Trousers. Vegan Leather Fabric for Create own Boston bag.

BINATI

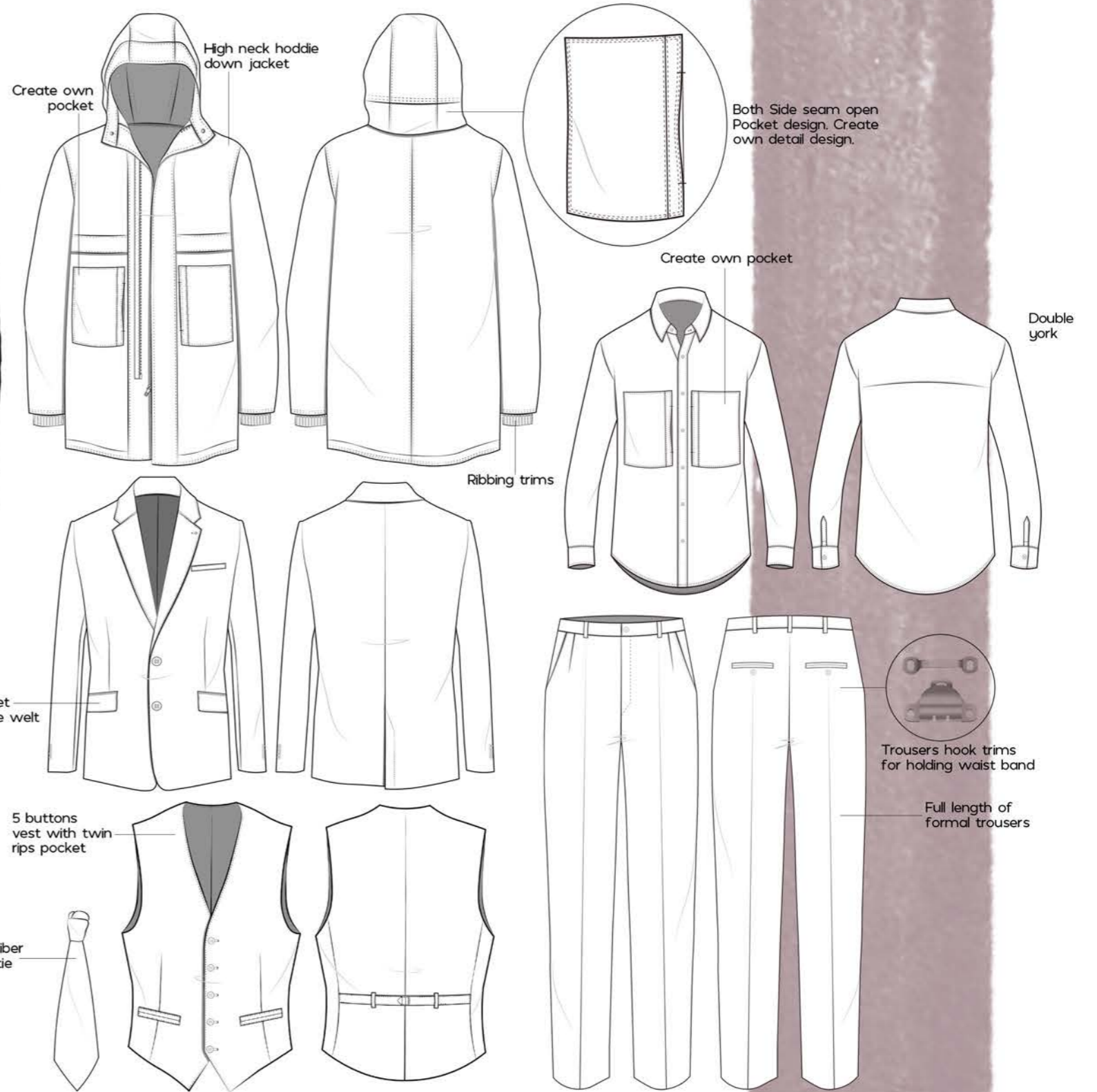
OUTFIT5 PRINTING LIGHT WEIGHT WATERPROOF JACKET STYLING WITH BIG BOSTON BAG WITH PRINTING AND MATCH WITH SPORTY LYCRA JERSEY AND CLASSIC WOOL BLEND TWILL TROUSERS.

OUTFIT 5 BREAKDOWN
Paul Smith
 ポール・スミス

FABRIC
 Charcoal Heavy Waterproof Fabric for Down Coat. Printing Herringbone Fabric for Suit Set-up. Poly Nylon Fabric for Lining of Down Coat. Stretch Poplin for Shirts and Poly Microfibre for Neck Tie.



OUTFIT 6 HEAVY DOWN COAT STYLING WITH PRINTING SUIT SET UP AND SHIRTS AND PRINTING TIE. QUIRKY PRINTING LINING INSIDE OF THE DOWN COAT.



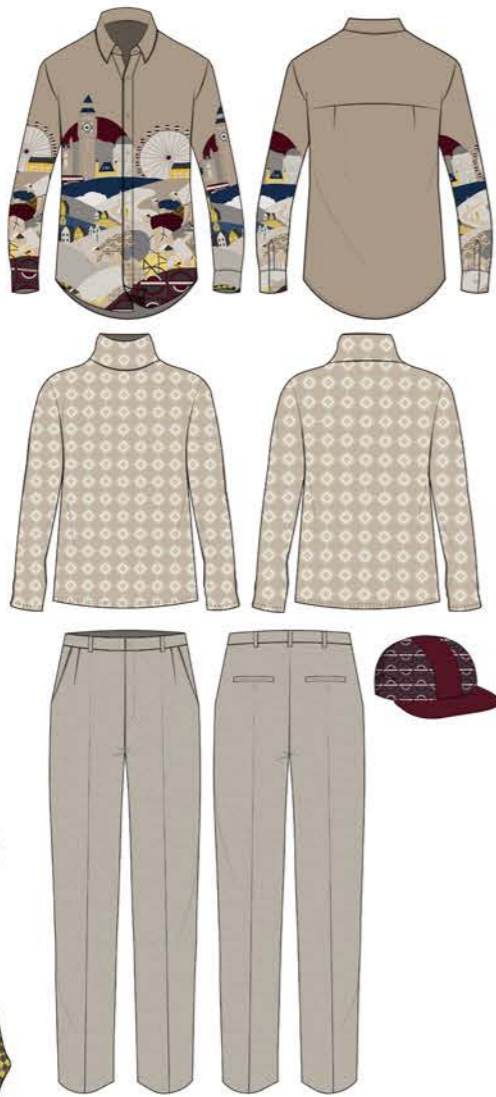
OUTFIT 6 BREAKDOWN

Paul Smith
 ポール・スミス

OUTFIT1



OUTFIT2



OUTFIT3



OUTFIT4



OUTFIT5



OUTFIT6





LONDON TRANSPORT

Paul Smith
ポール・スミス



Paul Smith
ポール・スミス

PHOTOSHOOT
Paul Smith
ポール・スミス